



InTherm

Indirect Tankless Domestic Hot Water Generator



The InTherm Series indirect water heaters deliver up to 90 GPM of hot water using high-efficiency plate-and-frame heat exchangers with real-time load tracking, eliminating the need for large storage tanks. Designed for compact spaces, they offer easy maintenance with removable heat exchangers, isolation valves, and backflush connections.

FEATURES & BENEFITS

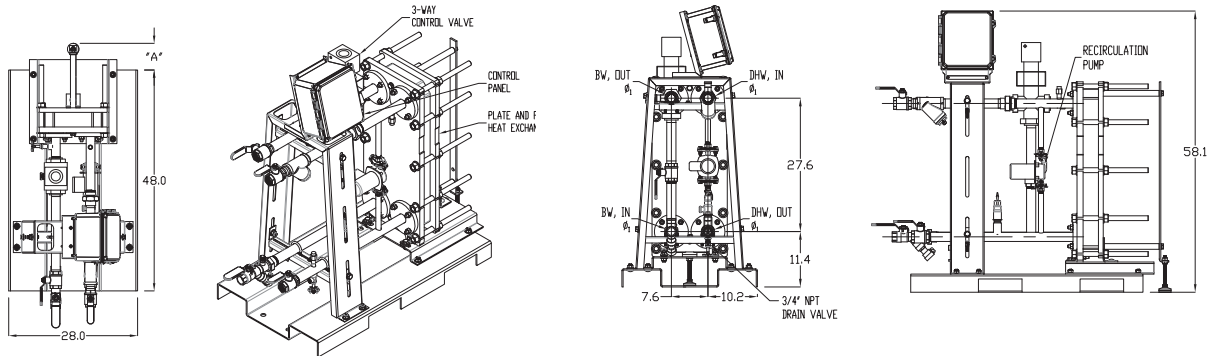
- ▶ Plate and Frame - Double Wall Construction
- ▶ $\pm 4^{\circ}\text{F}$ temp control, 5°F Approach Temperature
- ▶ Fully modulating electronic 3-Way control valve
- ▶ Potable water: Stainless steel or copper alloys construction for domestic water
- ▶ Control Panel can be rotated 180° for easy readability
- ▶ PID controls compatible with Building Management System via ModBus IP or built-in BacNet IP
- ▶ Fully packaged solution for quick and easy single point connections
- ▶ Compact Footprint - unit can fit through standard doorways
- ▶ Compatible with low temperature condensing boiler water
- ▶ Certifications: ANSI/AHRI 400, ASME

APPLICATIONS

► Ideal for new or retrofit projects, supporting single or multiple units without storage tanks.

► Suitable for apartments, healthcare, hospitality, educational facilities, correctional facilities, industrial sites, and government or office buildings.

SPECIFICATIONS & DIMENSIONS



MODEL	INT-18	INT-26	INT-36	INT-52	INT-80
SPECIFICATIONS					
Electrical Requirements	120/1/60 Hz 2 Amp or 220/1/50 Hz 2 Amp				
Standby Amperage Draw	2 Amp				
Full Load Amperage Draw	2 Amp				
Domestic Water Pressure Drop	Under 8 PSIG @ max. rated flow				
Max. Continuous Water Flow	90 GPM				
Ambient Temperature	32-110°F				
Max. Boiler Water Pressure & Temperature	150 PSIG @ 220°F <i>For high pressure applications contact the factory for more information</i>				
Max. Domestic Water Operating Pressure	150PSIG (standard) <i>For high pressure applications contact the factory for more information</i>				
Adjustable Temperature Control Set Point	Up to 180°F				
Accuracy	+/-4°F				
Water Inlets/Outlet Connection Sizes	1.5" FNPT		2.0" FNPT		
Estimated Weight, Shipping	934 lbs	963 lbs	1024 lbs	1082 lbs	1315 lbs
Standard Listing & Approvals	ANSI / AHRI 400, ASME				
DIMENSIONS					
Water Connections (NPT)	1-1/2"	1-1/2"	2"	2"	2"
"A"	5.8	5.8	5.8	13.6	13.6

Note: Dimensions and Specifications subject to change without notice.



Call: (315) 298-5121

972 Centerville Road
Pulaski, NY 13142



fulton.com/intherm

Drawings & documentation available online

INTHERM_SALES-SHEET_250408

