



# Secure Seal<sup>®</sup>

Single-Wall, Double-Wall and Double-Wall  
Insulated Special GasVent



# Secure Seal® SS, SSD, SSID, & Flex

## QUALITY AND DEPENDABILITY

The Secure Seal flue is manufactured from stainless steel designed for extreme resistance to chloride ion pitting, crevice corrosion and stress corrosion cracking, as well as general corrosion in oxidizing and moderately reducing environments. 29-4C is the standard choice, but also available in 316L, for withstanding the harmful effects of corrosive condensates created by partially or fully condensing high-efficiency natural gas and propane-fired heating appliances.

The Canadian Gas Research Institute found that test results proved 29-4C and 316L to be one of the two “most corrosion-resistant alloys of 20 candidate stainless steels evaluated for resistance to chloride-induced corrosion in condensing and partially condensing gas-fired appliances.”

## STRINGENT STANDARDS FOR QUALITY ASSURANCE

To guarantee a perfect fit every time and to avoid built-in stress points or weak areas, tube ends are formed under stringent guidelines and held to exacting standards.

The casing (outer tube on Secure Seal SSD/SSID) is manufactured from type 441 stainless steel to provide long-lasting performance and stability when exposed to the outdoors.

The air space between the flue and casing is 1” on SSD and 2” insulated on SSID, providing close clearances to combustibles, reasonable outside dimensions and an additional heat shield or margin of safety where needed.

## BUILT TO LAST

Secure Seal features a smooth weld seam inside and out, which is completely shielded during the welding process. Contamination or molecular changes in the weld seam are avoided and no fillers are used in the welding process.

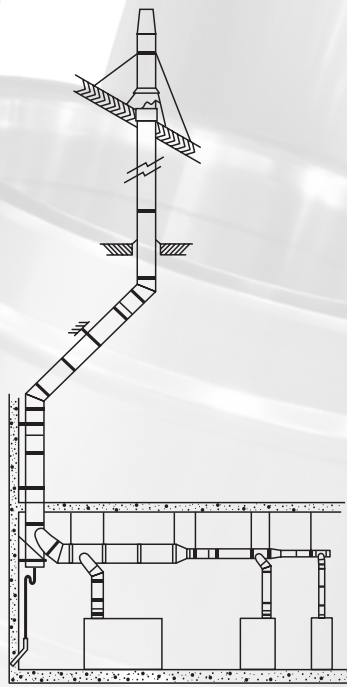
The Secure Seal double-wall system is fully interchangeable with our Secure Seal single-wall system. Both have been conformed to UL1738 and certified to ULC-S636 safety standards. When installed according to Security Chimneys’ installation instructions, Secure Seal meets all test requirements for horizontal and vertical, interior or exterior installations. SSID features the same construction as SSD, but with 2” air space filled with mineral wool insulation.



# SECURITY CHIMNEYS SECURE SEAL SINGLE WALL AND DOUBLE WALL GAS VENT



| Features   | Benefits  |
|--|---|
| Laser butt-welding   | <ul style="list-style-type: none"><li>• Reinforces strength</li><li>• Prevents leakage</li><li>• Increases durability and reliability</li></ul>                                       |
| Built-in Secure Lock system  | <ul style="list-style-type: none"><li>• Provides quick and easy assembly and disassembly</li><li>• Requires less time on the job site</li></ul>                                       |
| Secure Seal sealing gaskets  | <ul style="list-style-type: none"><li>• Self-sealing, so there's no need to apply sealing material when pieces are joined together</li><li>• Easier and faster installation</li></ul> |
| Standard adjustable vent length                                    | <ul style="list-style-type: none"><li>• Provides vertical or horizontal adjustment for easy system pitching</li></ul>   |
| 29-4C stainless steel standard or 316L stainless steel alternative | <ul style="list-style-type: none"><li>• Resists the extreme corrosive environments found in condensing boilers</li><li>• Assures safe and trouble-free operation</li></ul>            |
| Proven track record  | <ul style="list-style-type: none"><li>• Conformed to UL1738 and certified to ULC-S636</li><li>• Type L: Listed to UL-641 and ULC-S609 (SSD/SSID)</li><li>• 15-year warranty</li></ul> |
| All accessories made of stainless steel                            | <ul style="list-style-type: none"><li>• For durability</li></ul>  |



Secure Seal Single Wall (SS)  
Vertical Installation



Secure Seal Double Wall (SSD)  
Vertical Through-the-Roof Installation

**Effective Length:**

When assembling two parts together, the joint will overlap 2-3/8". So effective length is normal length minus 2-3/8".

**Vertical Installation Requirements**

1. The vent system must terminate at least 3 feet above the roof line and at least 2 feet higher than any portion of the building within 10 feet. This limitation can be removed if an engineering analysis demonstrates normal and safe operation of appliance.

2. When terminated at a height of more than 10 feet, the stack must be supported by a Guy Section.

3. The vent system must terminate with one of the Secure Seal terminations.

**SECURE SEAL SINGLE WALL (SS)**

| Minimum Clearance to Combustibles |                             |                          |            |          |            |          |
|-----------------------------------|-----------------------------|--------------------------|------------|----------|------------|----------|
| Diameter                          | Rated operating temperature | Max flue gas temperature | Enclosed   |          | Unenclosed |          |
|                                   |                             |                          | Horizontal | Vertical | Horizontal | Vertical |
| 3" to 12"                         | 194° F/90° C (Canada Only)  | 550° F                   | N/A        | N/A      | 0"         | 0"       |
|                                   | 480° F                      | 550° F                   | N/A        | N/A      | 2"         | 2"       |
| 14" to 24"                        | 194° F/90° C (Canada Only)  | 550° F                   | N/A        | N/A      | 0"         | 0"       |
|                                   | 480° F                      | 550° F                   | N/A        | N/A      | 4"         | 4"       |

**SECURE SEAL DOUBLE WALL (SSD/SSID)**

| Minimum Clearance to Combustibles |                             |                          |            |          |            |          |
|-----------------------------------|-----------------------------|--------------------------|------------|----------|------------|----------|
| Diameter                          | Rated operating temperature | Max flue gas temperature | Enclosed   |          | Unenclosed |          |
|                                   |                             |                          | Horizontal | Vertical | Horizontal | Vertical |
| 3" to 12"                         | 194° F/90° C (Canada Only)  | 550° F                   | N/A        | 0"       | 0"         | 0"       |
|                                   | 480° F                      | 550° F                   | N/A        | 1"       | 1"         | 1"       |
| 14" to 24"                        | 194° F/90° C (Canada Only)  | 550° F                   | N/A        | 0"       | 0"         | 0"       |
|                                   | 480° F                      | 550° F                   | N/A        | 1"       | 3"         | 1"       |
| 3" to 12" (L-Vent)                | 194° F/90° C (Canada Only)  | 570° F                   | N/A        | 0"       | 0"         | 0"       |
|                                   | 480° F                      | 570° F                   | N/A        | 2"       | 2"         | 2"       |
| 14" to 24" (L-Vent)               | 194° F/90° C (Canada Only)  | 570° F                   | N/A        | 0"       | 0"         | 0"       |
|                                   | 480° F                      | 570° F                   | N/A        | 2"       | 3"         | 2"       |

| Material Thickness |                               |                               |
|--------------------|-------------------------------|-------------------------------|
| Diameter           | Inner Wall Material Thickness | Outer Wall Material Thickness |
| 3" - 9"            | 29-4C - .015"<br>316L - .015" | 29-4C - .015"<br>316L - .015" |
| 10" - 16"          | 29-4C - .020"<br>316L - .019" | 29-4C - .020"<br>316L - .019" |
| 18" - 24"          | 29-4C - .024"<br>316L - .024" | 29-4C - .024"<br>316L - .024" |

## PART NUMBERS

These instructions identify major model SS-SSD-SSID parts by name and part number.

| Material Code Designations |                            |
|----------------------------|----------------------------|
| B                          | Type 316 Stainless Steel   |
| H                          | Type 430 Stainless Steel   |
| K                          | Type 441 Stainless Steel   |
| P                          | Type 439 Stainless Steel   |
| U                          | Type 29-4C Stainless Steel |

## Example:

**SSD 36" length** with inside diameter 14" made of 29-4C inner flue and SS441 outer casting.

|       |      |      |          |
|-------|------|------|----------|
| SSD   | 14   | L36  | UK       |
| Model | Dia. | Part | Material |

**SS 30° elbow** with inside diameter 22" made of 316L.

|       |      |      |          |
|-------|------|------|----------|
| SS    | 22   | E30  | B        |
| Model | Dia. | Part | Material |

**SSD wall support** for 8" diameter

chimney made of stainless 439.

|       |      |      |          |
|-------|------|------|----------|
| SSD   | 8    | WSHD | P        |
| Model | Dia. | Part | Material |

## Installation

Each Secure Seal vent length and component features our Secure Lock system and Viton® o-ring gasket, which insure a gas- and water-tight system. Parts are easily pushed and fastened together instantly and effortlessly.

Secure Seal can be taken apart and easily reassembled, making inspection, maintenance or rerouting of Secure Seal systems simple and straightforward.

Secure Seal provides an extensive range of components and accessories, made of stainless steel, allowing any type of installation. On top of the common components, we also offer special parts that help simplify installation, such as the 2-degree elbow and 43-degree tee (simplifying pitching on a horizontal vent) or the 18" and 36" adjustable lengths (to help maximize ease of installation). Connecting the SSD to a heater is effortless with one of the many adaptors approved by heating appliance manufacturers. Heating equipment can be operated immediately upon completing a Secure Seal installation, as no cure time or cleanup is required.

Note: If viton caulking is used at the boiler adaptor or an adjustable length, there is a cure time of 24 hours.

When venting Category I, II, III, or IV appliances or type L vented appliances, Secure Seal must be used for the entire length of the system. Do not mix pipe, fittings, or joining methods from different manufacturers. Every vent system must be planned and installed for optimum performance and safety. The venting system must be free to expand and contract and must be supported in accordance with these instructions. (Check for unrestricted vent movement through walls, ceilings, and roof penetrations). Refer to the gas appliance manufacturer's instructions to determine venting requirements and limitations with respect to installation and use of the appliance. It is the responsibility of the installer to contact local building and fire officials concerning any installation restrictions and/or inspection requirements that may apply. Permits may be required before starting and installation.

- If required by the appliance manufacturer, a Drain Tee Cap must be located as close as possible to the appliance flue outlet. Depending on the arrangement of the vent, more than one drain may be required. Unless a Drain Tee Cap is supplied with the appliance, install a Secure Seal Drain Tee Cap.
- More than one Category II, III, or IV appliance may not be connected into the same vent system unless the appliance manufacturer specifically approved such a system and the appliance is designed for multiple venting.
- Secure Seal must not come in contact with plumbing or electrical systems.
- Maintain rated clearances to combustibles over the entire length of the vent system.
- Secure Seal shall not be routed into, through, or within any vent, such as an existing masonry or factory-built chimney that is connected to another appliance.

# SSD & SSID Venting Lengths

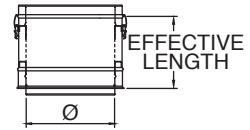
## SSD & SSID Lengths

Use to vent category II, III and IV appliances.

| Ø         | Effective Length | Product Code SSD | Product Code SSID |
|-----------|------------------|------------------|-------------------|
| 3" to 24" | 6-5/8"           | SSDØL9           | SSIDØL9           |
| 3" to 24" | 9-5/8"           | SSDØL12          | SSIDØL12          |
| 3" to 24" | 15-5/8"          | SSDØL18          | SSIDØL18          |
| 3" to 24" | 21-5/8"          | SSDØL24          | SSIDØL24          |
| 3" to 24" | 33-5/8"          | SSDØL36          | SSIDØL36          |
| 5" to 9"  | 45-5/8"          | SSDØL48          | SSIDØL48          |

Note: SSID 3", 9" and 24" not available.

Note: SSIDØL48 only available in 316 material.

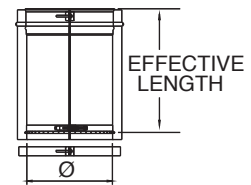


## SSD & SSID Adjustable Lengths

Use to add length to straight length of Secure Seal pipe. Adds 2"–14" of length. Requires at least 4" overlap for a secure connection. Available in Custom Lengths.

| Ø         | Effective Length  | Product Code SSD | Product Code SSID |
|-----------|-------------------|------------------|-------------------|
| 3" to 24" | 4-1/4" to 6-5/8"  | SSDØAL9          | SSIDØAL9          |
| 3" to 24" | 4-1/4" to 15-5/8" | SSDØAL18         | SSIDØAL18         |

Note: SSID 3", 9" and 24" not available.

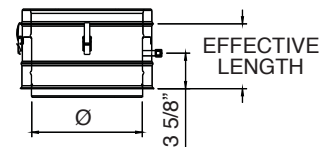


## SSD & SSID Test Port Lengths

Use to test for proper appliance operation without penetrating the vent wall. Easy access to perform flue gas analysis. Test port plug included.

| Ø         | Effective Length | Product Code SSD | Product Code SSID |
|-----------|------------------|------------------|-------------------|
| 3" to 24" | 6-5/8"           | SSDØTPL          | SSIDØTPL          |

Note: SSID 3", 9" and 24" not available.



## SSD & SSID Drain Lengths

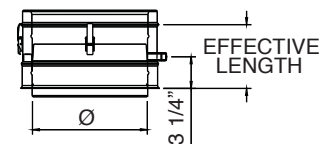
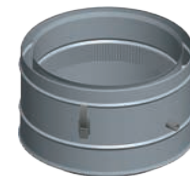
| Ø         | Effective Length | Product Code SSD | Product Code SSID | K Factor |
|-----------|------------------|------------------|-------------------|----------|
| 3" to 24" | 6-5/8"           | SSDØDL           | SSIDØDL           | 0.25     |

Drain plug not included.

Drain Ø4–Ø10, 1/4 NPT, 1/2 O.D

Drain 12–Ø24, 1/2 NPT, 5/8 O.D

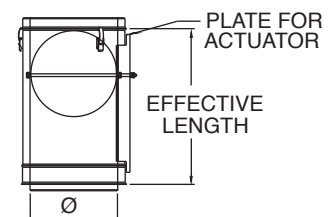
Note: SSID 3", 9" and 24" not available.



## SSD & SSID Damper Lengths

| Ø         | Effective Length | Product Code SSD | Product Code SSID | K Factor  |
|-----------|------------------|------------------|-------------------|-----------|
| 3" to 24" | 21-5/8"          | SSDØDAMP         | SSIDØDAMP         | 0.60-9999 |

Note: SSID 3", 9" and 24" not available.

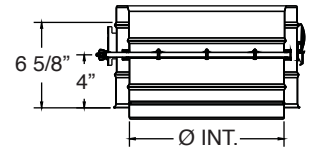
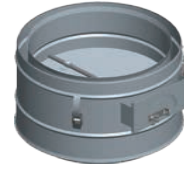


# SSD & SSID Venting Lengths

## SSD & SSID Damper Lengths Short

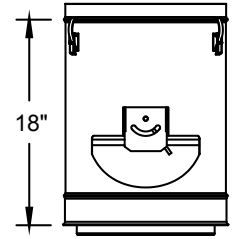
| Ø         | Effective Length | Product Code SSD | Product Code SSID | K Factor  |
|-----------|------------------|------------------|-------------------|-----------|
| 3" to 24" | 6-5/8"           | SSDØDAMPS        | SSIDØDAMPS        | 0 to 9999 |

Note: SSID 3", 9" and 24" not available.



## SSD K&W Fixed Blade Damper Lengths

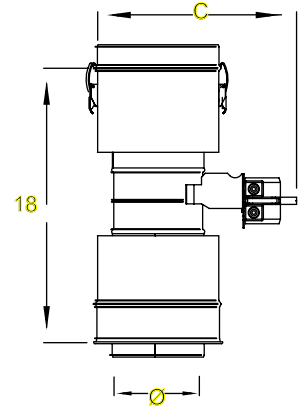
| Ø         | Effective Length | Product Code SSD |
|-----------|------------------|------------------|
| 6" to 18" | 18"              | SSDØKWDAMP       |



## SSD Motorized Damper Lengths

| Ø         | Effective Length | Product Code SSD |
|-----------|------------------|------------------|
| 3" to 18" | 18"              | SSDØMOTDAMP      |

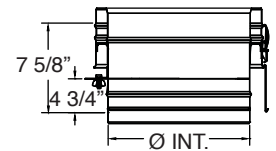
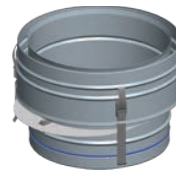
Note: SSD 5", 7", 9", 11", 13", 15", and 17" not available.



## SSD & SSID Vent Flow Regulator

| Ø         | Effective Length | Product Code SSD | Product Code SSID | K Factor  |
|-----------|------------------|------------------|-------------------|-----------|
| 3" to 24" | 5-7/8"           | SSDØVFR          | SSIDØVFR          | 0 to 9999 |

Note: SSID 3", 9" and 24" not available.

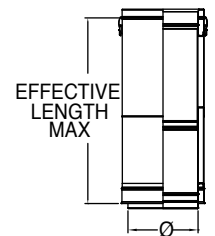


## SSD Telescopic Lengths

Telescopic lengths do not require cutting to fit dimension.

| Ø         | Effective Length | Product Code |
|-----------|------------------|--------------|
| 3" to 24" | 14" to 20"       | SSDØLAT20    |
| 3" to 24" | 20" to 32"       | SSDØLAT32    |

Note: SSID 3", 9" and 24" not available.

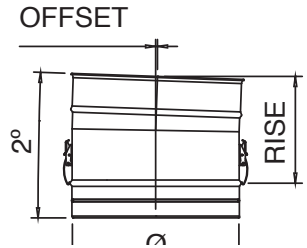


# SSD & SSID Venting Elbows

## SSD 2-Degree Elbow

Use to facilitate the 2° pitch required in horizontal runs. Offsets obstructions as needed. Allows for better condensate management and less back pressure.

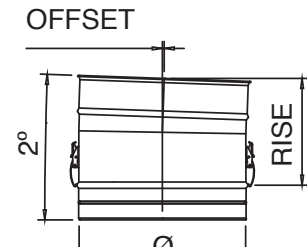
| Ø          | Offset | Rise   | Product Code SSD | K Factor |
|------------|--------|--------|------------------|----------|
| 3" to 5"   | 1/8"   | 7-3/4" | SSDØE2           | .04      |
| 6" to 8"   | 1/8"   | 7-7/8" | SSDØE2           | .04      |
| 9" to 12"  | 1/8"   | 8"     | SSDØE2           | .04      |
| 14"        | 1/8"   | 8-1/8" | SSD14E2          | .03      |
| 16" to 18" | 1/8"   | 8-1/4" | SSDØE2           | .03      |
| 20" to 22" | 1/8"   | 8-3/8" | SSDØE2           | .03      |
| 24"        | 1/8"   | 8-1/2" | SSD24E2          | .03      |



## SSID 2-Degree Elbow

Use to facilitate the 2° pitch required in horizontal runs. Offsets obstructions as needed. Allows for better condensate management and less back pressure. 9" and 24" not available.

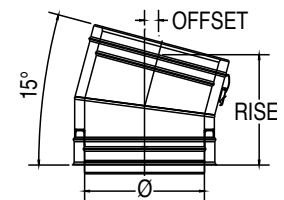
| Ø          | Offset | Rise   | Product Code SSID | K Factor |
|------------|--------|--------|-------------------|----------|
| 4" to 5"   | 1/8"   | 7-3/4" | SSIDØE2           | .04      |
| 6" to 8"   | 1/8"   | 7-7/8" | SSIDØE2           | .04      |
| 10" to 12" | 1/8"   | 8"     | SSIDØE2           | .04      |
| 14"        | 1/8"   | 8-1/8" | SSID14E2          | .04      |
| 16" to 18" | 1/8"   | 8-1/4" | SSIDØE2           | .04      |
| 20" to 22" | 1/8"   | 8-3/8" | SSIDØE2           | .04      |



## SSD 15-Degree Elbow

Offsets obstructions as needed. Allows for better condensate management and less back pressure.

| Ø   | Offset | Rise    | Product Code SSD | K Factor |
|-----|--------|---------|------------------|----------|
| 3"  | 1"     | 8-3/4"  | SSD3E15          | .31      |
| 4"  | 1"     | 8-3/4"  | SSD4E15          | .31      |
| 5"  | 1"     | 8-3/4"  | SSD5E15          | .30      |
| 6"  | 1-1/8" | 9"      | SSD6E15          | .30      |
| 7"  | 1-1/8" | 9-3/8"  | SSD7E15          | .29      |
| 8"  | 1-1/4" | 9-5/8"  | SSD8E15          | .29      |
| 9"  | 1-1/4" | 9-7/8"  | SSD9E15          | .28      |
| 10" | 1-1/4" | 10-1/8" | SSD10E15         | .28      |
| 12" | 1-3/8" | 10-5/8" | SSD12E15         | .27      |
| 14" | 1-3/8" | 11-1/8" | SSD14E15         | .27      |
| 16" | 1-1/2" | 11-5/8" | SSD16E15         | .26      |
| 18" | 1-1/2" | 12-1/8" | SSD18E15         | .26      |
| 20" | 1-5/8" | 12-5/8" | SSD20E15         | .26      |
| 22" | 1-5/8" | 13-1/4" | SSD22E15         | .26      |
| 24" | 1-3/4" | 13-3/4" | SSD24E15         | .26      |



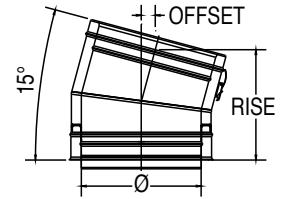


# SSD & SSID Venting Elbows

## SSID 15-Degree Elbow

Offsets obstructions as needed. Allows for better condensate management and less back pressure. 9" and 24" not available.

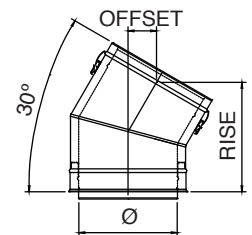
| Ø   | Offset | Rise    | Product Code SSID | K Factor |
|-----|--------|---------|-------------------|----------|
| 4"  | 1-1/8" | 9"      | SSID4E15          | .31      |
| 5"  | 1-1/8" | 9-3/8"  | SSID5E15          | 0.3      |
| 6"  | 1-1/4" | 9-5/8"  | SSID6E15          | 0.3      |
| 7"  | 1-1/4" | 9-7/8"  | SSID7E15          | 0.29     |
| 8"  | 1-1/4" | 10-1/8" | SSID8E15          | 0.29     |
| 10" | 1-3/8" | 10-5/8" | SSID10E15         | 0.28     |
| 12" | 1-3/8" | 11-1/8" | SSID12E15         | 0.27     |
| 14" | 1-1/2" | 11-5/8" | SSID14E15         | 0.27     |
| 16" | 1-1/2" | 12-1/8" | SSID16E15         | 0.26     |
| 18" | 1-5/8" | 12-5/8" | SSID18E15         | 0.26     |
| 20" | 1-5/8" | 13-1/4" | SSID20E15         | 0.26     |
| 22" | 1-3/4" | 13-3/4" | SSID22E15         | 0.26     |



## SSD 30-Degree Elbow

Offsets obstructions as needed. Allows for better condensate management and less back pressure.

| Ø   | Offset | Rise    | Product Code | K Factor |
|-----|--------|---------|--------------|----------|
| 3"  | 2-3/8" | 9-5/8"  | SSD3E30      | .65      |
| 4"  | 2-3/8" | 9-5/8"  | SSD4E30      | .61      |
| 5"  | 2-3/8" | 9-5/8"  | SSD5E30      | .60      |
| 6"  | 2-5/8" | 10-1/8" | SSD6E30      | .59      |
| 7"  | 2-3/4" | 10-5/8" | SSD7E30      | .58      |
| 8"  | 2-7/8" | 11-1/8" | SSD8E30      | .57      |
| 9"  | 3"     | 11-5/8" | SSD9E30      | .56      |
| 10" | 3-1/8" | 12-1/8" | SSD10E30     | .55      |
| 12" | 3-3/8" | 13-1/8" | SSD12E30     | .54      |
| 14" | 3-5/8" | 14-1/8" | SSD14E30     | .54      |
| 16" | 3-7/8" | 15-1/8" | SSD16E30     | .53      |
| 18" | 4-1/8" | 16-1/8" | SSD18E30     | .52      |
| 20" | 4-1/2" | 17-1/8" | SSD20E30     | .52      |
| 22" | 4-3/4" | 18-1/8" | SSD22E30     | .51      |
| 24" | 5"     | 19-1/8" | SSD24E30     | .51      |

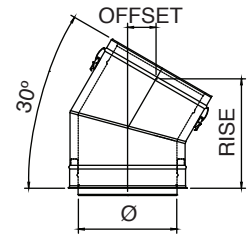


# SSD & SSID Venting Elbows

## SSID 30-Degree Elbow

Offsets obstructions as needed. Allows for better condensate management and less back pressure. 9" and 24" not available.

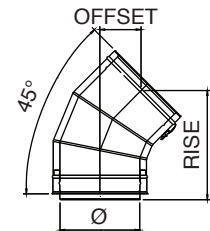
| Ø   | Offset | Rise    | Product Code SSID | K Factor |
|-----|--------|---------|-------------------|----------|
| 4"  | 2-5/8" | 10-1/8" | SSID4E30          | 0.61     |
| 5"  | 2-3/4" | 10-5/8" | SSID5E30          | 0.60     |
| 6"  | 2-7/8" | 11-1/8" | SSID6E30          | 0.59     |
| 7"  | 3"     | 11-5/8" | SSID7E30          | 0.58     |
| 8"  | 3-1/8" | 12-1/8" | SSID8E30          | 0.57     |
| 10" | 3-3/8" | 13-1/8" | SSID10E30         | 0.55     |
| 12" | 3-5/8" | 14-1/8" | SSID12E30         | 0.54     |
| 14" | 3-7/8" | 15-1/8" | SSID14E30         | 0.54     |
| 16" | 4-1/8" | 16-1/8" | SSID16E30         | 0.53     |
| 18" | 4-1/2" | 17-1/8" | SSID18E30         | 0.52     |
| 20" | 4-3/4" | 18-1/8" | SSID20E30         | 0.52     |
| 22" | 5"     | 19-1/8" | SSID22E30         | 0.51     |



## SSD 45-Degree Elbow

Offsets obstructions as needed. Allows for better condensate management and less back pressure.

| Ø        | Offset | Rise    | Product Code SSD | K Factor |
|----------|--------|---------|------------------|----------|
| 3"       | 3-7/8" | 10-1/8" | SSD3E45          | .30      |
| 4" to 5" | 3-7/8" | 10-1/8" | SSDØE45          | .26      |
| 6"       | 4-1/4" | 10-7/8" | SSD6E45          | .17      |
| 7"       | 4-1/2" | 11-1/2" | SSD7E45          | .16      |
| 8"       | 4-7/8" | 12-1/4" | SSD8E45          | .14      |
| 9"       | 5-1/8" | 13"     | SSD9E45          | .13      |
| 10"      | 5-3/8" | 13-5/8" | SSD10E45         | .12      |
| 12"      | 6"     | 15-1/8" | SSD12E45         | .11      |
| 14"      | 6-5/8" | 16-1/2" | SSD14E45         | .11      |
| 16"      | 7-1/8" | 17-7/8" | SSD16E45         | .10      |
| 18"      | 7-3/4" | 19-3/8" | SSD18E45         | .09      |
| 20"      | 8-3/8" | 20-3/4" | SSD20E45         | .08      |
| 22"      | 8-7/8" | 22-1/8" | SSD22E45         | .08      |
| 24"      | 9-1/2" | 23-5/8" | SSD24E45         | .08      |

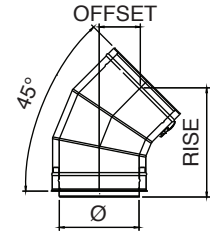


# SSD & SSID Venting Elbows

## SSID 45-Degree Elbow

Offsets obstructions as needed. Allows for better condensate management and less back pressure. 9" and 24" not available.

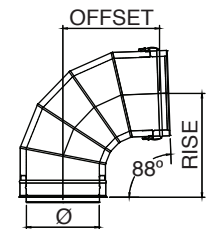
| Ø   | Offset | Rise    | Product Code SSID | K Factor |
|-----|--------|---------|-------------------|----------|
| 4"  | 4-1/4" | 10-7/8" | SSID4E45          | 0.26     |
| 5"  | 4-1/2" | 11-1/2" | SSID5E45          | 0.22     |
| 6"  | 4-7/8" | 12-1/4" | SSID6E45          | 0.17     |
| 7"  | 5-1/8" | 13"     | SSID7E45          | 0.16     |
| 8"  | 5-3/8" | 13-5/8" | SSID8E45          | 0.14     |
| 10" | 6"     | 15-1/8" | SSID10E45         | 0.12     |
| 12" | 6-5/8" | 16-1/2" | SSID12E45         | 0.11     |
| 14" | 7-1/8" | 17-7/8" | SSID14E45         | 0.11     |
| 16" | 7-3/4" | 19-3/8" | SSID16E45         | 0.1      |
| 18" | 8-3/8" | 20-3/4" | SSID18E45         | 0.09     |
| 20" | 8-7/8" | 22-1/8" | SSID20E45         | 0.08     |
| 22" | 9-1/2" | 23-5/8" | SSID22E45         | 0.08     |



## SSD 88-Degree Elbow

Use to transition from a vertical to a horizontal run. Stabilizes a 2° pitch towards the condensate drain for good condensate management.

| Ø        | Offset  | Rise    | Product Code SSD | K Factor |
|----------|---------|---------|------------------|----------|
| 3"       | 8-3/8"  | 9-1/4"  | SSD3E88          | .60      |
| 4" to 5" | 8-3/8"  | 9-1/4"  | SSDØE88          | .54      |
| 6"       | 9-1/4"  | 10-1/4" | SSD6E88          | .42      |
| 7"       | 10-1/4" | 11-1/4" | SSD7E88          | .39      |
| 8"       | 11-1/4" | 12-1/4" | SSD8E88          | .37      |
| 9"       | 12-1/4" | 13-1/4" | SSD9E88          | .34      |
| 10"      | 13-1/8" | 14-1/4" | SSD10E88         | .32      |
| 12"      | 15-1/8" | 16-1/4" | SSD12E88         | .29      |
| 14"      | 17"     | 18-1/4" | SSD14E88         | .27      |
| 16"      | 19"     | 20-1/4" | SSD16E88         | .25      |
| 18"      | 20-7/8" | 22-1/4" | SSD18E88         | .24      |
| 20"      | 22-7/8" | 24-1/4" | SSD20E88         | .23      |
| 22"      | 24-3/4" | 26-1/4" | SSD22E88         | .21      |
| 24"      | 26-5/8" | 28-1/4" | SSD24E88         | .20      |

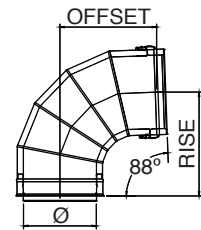


# SSD & SSID Venting Elbows

## SSID 88-Degree Elbow

Use to transition from a vertical to a horizontal run. Stabilizes a 2° pitch towards the condensate drain for good condensate management. 9" and 24" not available.

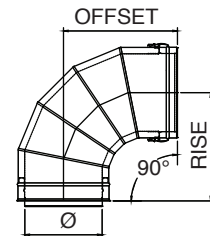
| Ø        | Offset  | Rise    | Product Code SSID | K Factor |
|----------|---------|---------|-------------------|----------|
| 4" to 5" | 9"      | 9-1/4"  | SSID0E88          | .54      |
| 6"       | 9-1/4"  | 10-1/4" | SSID6E88          | .42      |
| 7"       | 10-1/4" | 11-1/4" | SSID7E88          | .39      |
| 8"       | 11-1/4" | 12-1/4" | SSID8E88          | .37      |
| 10"      | 13-1/8" | 14-1/4" | SSID10E88         | .32      |
| 12"      | 15-1/8" | 16-1/4" | SSID12E88         | .29      |
| 14"      | 17"     | 18-1/4" | SSID14E88         | .27      |
| 16"      | 19"     | 20-1/4" | SSID16E88         | .25      |
| 18"      | 20-7/8" | 22-1/4" | SSID18E88         | .24      |
| 20"      | 22-7/8" | 24-1/4" | SSID20E88         | .23      |
| 22"      | 24-3/4" | 26-1/4" | SSID22E88         | .21      |



## SSD 90-Degree Elbow

Use to go from horizontal to vertical runs or vertical to horizontal runs. Use to turn vent 90°.

| Ø        | Offset  | Rise    | Product Code SSD | K Factor |
|----------|---------|---------|------------------|----------|
| 3"       | 8-1/2"  | 9-1/8"  | SSD3E90          | .60      |
| 4" to 5" | 8-1/2"  | 9-1/8"  | SSD0E90          | .54      |
| 6"       | 9-1/2"  | 10-1/8" | SSD6E90          | .42      |
| 7"       | 10-1/2" | 11-1/8" | SSD7E90          | .39      |
| 8"       | 11-1/2" | 12-1/8" | SSD8E90          | .37      |
| 9"       | 12-1/2" | 13-1/8" | SSD9E90          | .34      |
| 10"      | 13-1/2" | 14-1/8" | SSD10E90         | .32      |
| 12"      | 15-1/2" | 16-1/8" | SSD12E90         | .29      |
| 14"      | 17-1/2" | 18-1/8" | SSD14E90         | .27      |
| 16"      | 19-1/2" | 20-1/8" | SSD16E90         | .25      |
| 18"      | 21-1/2" | 22-1/8" | SSD18E90         | .24      |
| 20"      | 23-1/2" | 24-1/8" | SSD20E90         | .23      |
| 22"      | 25-1/2" | 26-1/8" | SSD22E90         | .21      |
| 24"      | 27-1/2" | 28-1/8" | SSD24E90         | .20      |

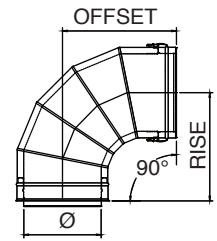
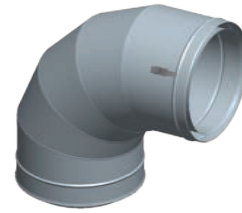


# SSD & SSID Venting Elbows

## SSID 90-Degree Elbow

Use to go from horizontal to vertical runs or vertical to horizontal runs. Use to turn vent 90°. 9" and 24" not available.

| Ø   | Offset  | Rise    | Product Code SSID | K Factor |
|-----|---------|---------|-------------------|----------|
| 4"  | 9-1/2"  | 10-1/8" | SSID4E90          | 0.54     |
| 5"  | 10-1/2" | 11-1/8" | SSID5E90          | 0.48     |
| 6"  | 11-1/2" | 12-1/8" | SSID6E90          | 0.42     |
| 7"  | 12-1/2" | 13-1/8" | SSID7E90          | 0.39     |
| 8"  | 13-1/2" | 14-1/8" | SSID8E90          | 0.37     |
| 10" | 15-1/2" | 16-1/8" | SSID10E90         | 0.32     |
| 12" | 17-1/2" | 18-1/8" | SSID12E90         | 0.29     |
| 14" | 19-1/2" | 20-1/8" | SSID14E90         | 0.27     |
| 16" | 21-1/2" | 22-1/8" | SSID16E90         | 0.25     |
| 18" | 23-1/2" | 24-1/8" | SSID18E90         | 0.24     |
| 20" | 25-1/2" | 26-1/8" | SSID20E90         | 0.23     |
| 22" | 27-1/2" | 28-1/8" | SSID22E90         | 0.21     |

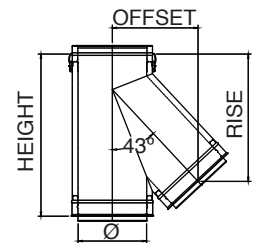


# SSD & SSID Venting Tees

## SSD 43-Degree Tee

Use in place of any tee for a 43° angle instead of 90°; can be used as a manifold connection to gang multiple boilers into a common vent.

| Ø   | Height  | Offset  | Rise    | Product Code SSD | K Factor |
|-----|---------|---------|---------|------------------|----------|
| 3"  | 15-1/2" | 7-5/8"  | 12-3/8" | SSD3T43          | 0.4      |
| 4"  | 16-1/2" | 8-1/4"  | 13-3/8" | SSD4T43          | 0.4      |
| 5"  | 18-1/2" | 8-7/8"  | 14-3/8" | SSD5T43          | 0.4      |
| 6"  | 19-1/2" | 9-5/8"  | 15-3/8" | SSD6T43          | 0.4      |
| 7"  | 20-1/2" | 10-1/4" | 16-1/4" | SSD7T43          | 0.4      |
| 8"  | 22-1/2" | 11-5/8" | 18"     | SSD8T43          | 0.4      |
| 9"  | 23-1/2" | 12-1/4" | 18-7/8" | SSD9T43          | 0.4      |
| 10" | 25-1/2" | 13"     | 19-3/4" | SSD10T43         | 0.4      |
| 12" | 28-1/2" | 15"     | 22-3/8" | SSD12T43         | 0.4      |
| 14" | 31-1/2" | 16-3/8" | 24-1/4" | SSD14T43         | 0.4      |
| 16" | 33-1/2" | 18-1/2" | 26-1/4" | SSD16T43         | 0.4      |
| 18" | 38-1/4" | 20-1/2" | 29-3/8" | SSD18T43         | 0.4      |
| 20" | 42-1/4" | 23-7/8" | 33-1/2" | SSD20T43         | 0.4      |
| 22" | 45-1/4" | 23-7/8" | 33-7/8" | SSD22T43         | 0.4      |
| 24" | 51-1/4" | 27-7/8" | 38-1/2" | SSD24T43         | 0.4      |



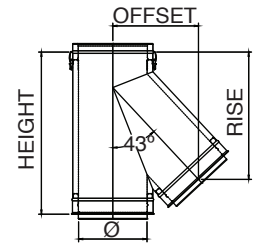
Available with smaller snout and custom height.

# SSD & SSID Venting Tees

## SSID 43-Degree Tee

Use in place of any tee for a 43° angle instead of 90°; can be used as a manifold connection to gang multiple boilers into a common vent. 9" and 24" not available.

| Ø   | Height  | Offset  | Rise    | Product Code<br>SSID | K Factor |
|-----|---------|---------|---------|----------------------|----------|
| 4"  | 19-1/2" | 9-5/8"  | 15-3/8" | SSID4T43             | 0.4      |
| 5"  | 20-1/2" | 10-1/4" | 16-1/4" | SSID5T43             | 0.4      |
| 6"  | 22-1/2" | 11-5/8" | 18"     | SSID6T43             | 0.4      |
| 7"  | 23-1/2" | 12-1/4" | 18-7/8" | SSID7T43             | 0.4      |
| 8"  | 25-1/2" | 13"     | 19-3/4" | SSID8T43             | 0.4      |
| 10" | 28-1/2" | 15"     | 22-3/8" | SSID10T43            | 0.4      |
| 12" | 31-1/2" | 16-3/8" | 24-1/4" | SSID12T43            | 0.4      |
| 14" | 33-1/2" | 18-1/2" | 26-1/4" | SSID14T43            | 0.4      |
| 16" | 38-1/4" | 20-1/2" | 29-3/8" | SSID16T43            | 0.4      |
| 18" | 42-1/4" | 23-7/8" | 33-1/2" | SSID18T43            | 0.4      |
| 20" | 45-1/4" | 23-7/8" | 33-7/8" | SSID20T43            | 0.4      |
| 22" | 51-1/4" | 27-7/8" | 38-1/2" | SSID22T43            | 0.4      |

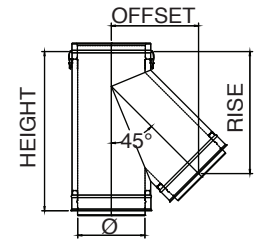


Available with smaller snout and custom height.

## SSD 45-Degree Tee

Use in place of any tee for a 45° angle instead of 90°; can be used as a manifold connection to gang multiple boilers into a common vent.

| Ø   | Height  | Offset  | Rise    | Product Code<br>SSD | K<br>Factor |
|-----|---------|---------|---------|---------------------|-------------|
| 3"  | 15-1/2" | 7-5/8"  | 12-1/4" | SSD3T45             | 0.4         |
| 4"  | 16-1/2" | 8-1/2"  | 13-1/4" | SSD4T45             | 0.4         |
| 5"  | 18-1/2" | 9-1/4"  | 14-1/8" | SSD5T45             | 0.4         |
| 6"  | 19-1/2" | 9-7/8"  | 15-1/8" | SSD6T45             | 0.4         |
| 7"  | 20-1/2" | 10-5/8" | 16"     | SSD7T45             | 0.4         |
| 8"  | 22-1/2" | 12"     | 17-5/8" | SSD8T45             | 0.4         |
| 9"  | 23-1/2" | 12-3/4" | 18-1/2" | SSD9T45             | 0.4         |
| 10" | 25-1/2" | 13-1/2" | 19-1/2" | SSD10T45            | 0.4         |
| 12" | 28-1/2" | 15-5/8" | 22"     | SSD12T45            | 0.4         |
| 14" | 31-1/2" | 17"     | 23-7/8" | SSD14T45            | 0.4         |
| 16" | 33-1/2" | 19-1/8" | 26-3/8" | SSD16T45            | 0.4         |
| 18" | 38-1/4" | 21-1/4" | 28-7/8" | SSD18T45            | 0.4         |
| 20" | 42-1/4" | 24-3/4" | 32-7/8" | SSD20T45            | 0.4         |
| 22" | 45-1/4" | 24-3/4" | 33-1/4" | SSD22T45            | 0.4         |
| 24" | 51-1/4" | 28-7/8" | 37-3/4" | SSD24T45            | 0.4         |



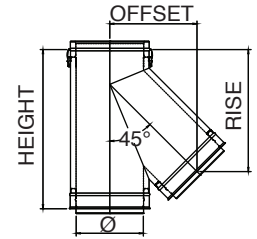
Available with smaller snout and custom height.

# SSD & SSID Venting Tees

## SSID 45-Degree Tee

Use in place of any tee for a 45° angle instead of 90°; can be used as a manifold connection to gang multiple boilers into a common vent. 9" and 24" not available.

| Ø   | Height  | Offset  | Rise    | Product Code<br>SSID | K Factor |
|-----|---------|---------|---------|----------------------|----------|
| 4"  | 19-1/2" | 9-7/8"  | 14-1/8" | SSID4T45             | 0.4      |
| 5"  | 20-1/2" | 10-5/8" | 14-1/8" | SSID5T45             | 0.4      |
| 6"  | 22-1/2" | 12"     | 15-1/8" | SSID6T45             | 0.4      |
| 7"  | 23-1/2" | 12-3/4" | 16"     | SSID7T45             | 0.4      |
| 8"  | 25-1/2" | 13-1/2" | 17-5/8" | SSID8T45             | 0.4      |
| 10" | 28-1/2" | 15-5/8" | 19-1/2" | SSID10T45            | 0.4      |
| 12" | 31-1/2" | 17"     | 22"     | SSID12T45            | 0.4      |
| 14" | 33-1/2" | 19-1/8" | 23-7/8" | SSID14T45            | 0.4      |
| 16" | 38-1/4" | 21-1/4" | 26-3/8" | SSID16T45            | 0.4      |
| 18" | 42-1/4" | 24-3/4" | 28-7/8" | SSID18T45            | 0.4      |
| 20" | 45-1/4" | 24-3/4" | 32-7/8" | SSID20T45            | 0.4      |
| 22" | 51-1/4" | 28-7/8" | 33-1/4" | SSID22T45            | 0.4      |

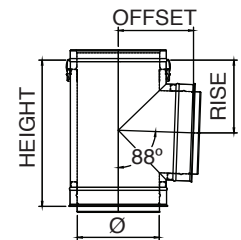


Available with smaller snout and custom height.

## SSD 88-Degree Tee

Use for a 88° offset, or to combine connections from two or more appliances into a common vent. Can also use as a condensate management point when used in conjunction with drain fitting. All Standard Tees are completely welded.

| Ø   | Height  | Offset | Rise    | Product Code<br>SSD | K Factor |
|-----|---------|--------|---------|---------------------|----------|
| 3"  | 12-1/2" | 7"     | 6-1/4"  | SSD3T88             | 1.21     |
| 4"  | 13-1/2" | 7"     | 6-5/8"  | SSD4T88             | 1.21     |
| 5"  | 14-1/2" | 8"     | 7-1/4"  | SSD5T88             | 1.21     |
| 6"  | 15-1/2" | 8"     | 7-5/8"  | SSD6T88             | 1.21     |
| 7"  | 16-1/2" | 9"     | 8-1/4"  | SSD7T88             | 1.21     |
| 8"  | 17-1/2" | 9"     | 8-5/8"  | SSD8T88             | 1.21     |
| 9"  | 18-1/2" | 10"    | 9-1/4"  | SSD9T88             | 1.21     |
| 10" | 19-1/2" | 10"    | 9-5/8"  | SSD10T88            | 1.21     |
| 12" | 21-1/2" | 11"    | 10-5/8" | SSD12T88            | 1.21     |
| 14" | 23-1/2" | 12"    | 11-5/8" | SSD14T88            | 1.21     |
| 16" | 25-1/2" | 13"    | 12-5/8" | SSD16T88            | 1.21     |
| 18" | 27-1/2" | 14"    | 13-5/8" | SSD18T88            | 1.21     |
| 20" | 29-1/2" | 15"    | 14-5/8" | SSD20T88            | 1.21     |
| 22" | 31-1/2" | 16"    | 15-5/8" | SSD22T88            | 1.21     |
| 24" | 33-1/2" | 17"    | 16-5/8" | SSD24T88            | 1.21     |



Available with smaller snout and custom height.

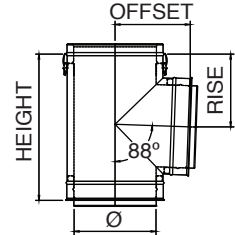
# SSD & SSID Venting Tees

## SSID 88-Degree Tee

Use for a 88° offset, or to combine connections from two or more appliances into a common vent. Can also use as a condensate management point when used in conjunction with drain fitting. All Standard Tees are completely welded. 9" and 24" not available.

| Ø   | Height  | Offset | Rise    | Product Code SSID | K Factor |
|-----|---------|--------|---------|-------------------|----------|
| 4"  | 15-1/2" | 8"     | 7-5/8"  | SSID4T88          | 1.21     |
| 5"  | 16-1/2" | 9"     | 8-1/4"  | SSID5T88          | 1.21     |
| 6"  | 17-1/2" | 9"     | 8-5/8"  | SSID6T88          | 1.21     |
| 7"  | 18-1/2" | 10"    | 9-1/4"  | SSID7T88          | 1.21     |
| 8"  | 19-1/2" | 10"    | 9-5/8"  | SSID8T88          | 1.21     |
| 10" | 21-1/2" | 11"    | 10-5/8" | SSID10T88         | 1.21     |
| 12" | 23-1/2" | 12"    | 11-5/8" | SSID12T88         | 1.21     |
| 14" | 25-1/2" | 13"    | 12-5/8" | SSID14T88         | 1.21     |
| 16" | 27-1/2" | 14"    | 13-5/8" | SSID16T88         | 1.21     |
| 18" | 29-1/2" | 15"    | 14-5/8" | SSID18T88         | 1.21     |
| 20" | 31-1/2" | 16"    | 15-5/8" | SSID20T88         | 1.21     |
| 22" | 33-1/2" | 17"    | 16-5/8" | SSID22T88         | 1.21     |

Available with smaller snout and custom height.

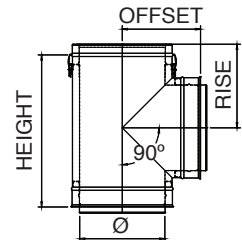


## SSD 90-Degree Tee

Use for a 90° offset, or to combine connections from two or more appliances into a common vent. Can also use as a condensate management point when used in conjunction with drain fitting. All Standard Tees are completely welded.

| Ø   | Height  | Offset | Rise    | Product Code SSD | K Factor |
|-----|---------|--------|---------|------------------|----------|
| 3"  | 12-1/2" | 7"     | 6-1/4"  | SSD3T90          | 1.21     |
| 4"  | 13-1/2" | 7"     | 6-1/2"  | SSD4T90          | 1.21     |
| 5"  | 14-1/2" | 8"     | 7"      | SSD5T90          | 1.21     |
| 6"  | 15-1/2" | 8"     | 7-1/2"  | SSD6T90          | 1.21     |
| 7"  | 16-1/2" | 9"     | 8"      | SSD7T90          | 1.21     |
| 8"  | 17-1/2" | 9"     | 8-1/2"  | SSD8T90          | 1.21     |
| 9"  | 18-1/2" | 10"    | 9"      | SSD9T90          | 1.21     |
| 10" | 19-1/2" | 10"    | 9-1/2"  | SSD10T90         | 1.21     |
| 12" | 21-1/2" | 11"    | 10-1/2" | SSD12T90         | 1.21     |
| 14" | 23-1/2" | 12"    | 11-1/2" | SSD14T90         | 1.21     |
| 16" | 25-1/2" | 13"    | 12-1/2" | SSD16T90         | 1.21     |
| 18" | 27-1/2" | 14"    | 13-1/2" | SSD18T90         | 1.21     |
| 20" | 29-1/2" | 15"    | 14-1/2" | SSD20T90         | 1.21     |
| 22" | 31-1/2" | 16"    | 15-1/2" | SSD22T90         | 1.21     |
| 24" | 33-1/2" | 17"    | 16-1/2" | SSD24T90         | 1.21     |

Available with smaller snout and custom height.





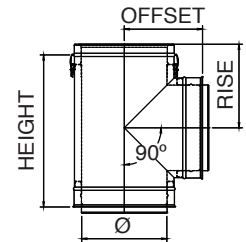
# SSD & SSID Venting Tees

## SSID 90-Degree Tee

Use for a 90° offset, or to combine connections from two or more appliances into a common vent. Can also use as a condensate management point when used in conjunction with drain fitting. All Standard Tees are completely welded. 9" and 24" not available.

| Ø   | Height  | Offset | Rise    | Product Code SSID | K Factor |
|-----|---------|--------|---------|-------------------|----------|
| 4"  | 15-1/2" | 8"     | 7-1/2"  | SSID4T90          | 1.21     |
| 5"  | 16-1/2" | 9"     | 8"      | SSID5T90          | 1.21     |
| 6"  | 17-1/2" | 9"     | 8-1/2"  | SSID6T90          | 1.21     |
| 7"  | 18-1/2" | 10"    | 9"      | SSID7T90          | 1.21     |
| 8"  | 19-1/2" | 10"    | 9-1/2"  | SSID8T90          | 1.21     |
| 10" | 21-1/2" | 11"    | 10-1/2" | SSID10T90         | 1.21     |
| 12" | 23-1/2" | 12"    | 11-1/2" | SSID12T90         | 1.21     |
| 14" | 25-1/2" | 13"    | 12-1/2" | SSID14T90         | 1.21     |
| 16" | 27-1/2" | 14"    | 13-1/2" | SSID16T90         | 1.21     |
| 18" | 29-1/2" | 15"    | 14-1/2" | SSID18T90         | 1.21     |
| 20" | 31-1/2" | 16"    | 15-1/2" | SSID20T90         | 1.21     |
| 22" | 33-1/2" | 17"    | 16-1/2" | SSID22T90         | 1.21     |

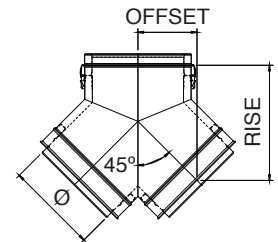
Available with smaller snout and custom height.



## SSD 90-Degree Tee Y

| Ø          | Offset  | Rise    | Product Code SSD | K Factor |
|------------|---------|---------|------------------|----------|
| 3"         | 4.5"    | 9-5/8"  | SSD3TY90         | 0.6      |
| 4"         | 5"      | 10-3/8" | SSD4TY90         | 0.6      |
| 5" and 6"  | 5-5/8"  | 11-1/8" | SSDØTY90         | 0.6      |
| 7" and 8"  | 6-3/8"  | 11-3/4" | SSDØTY90         | 0.6      |
| 9" and 10" | 7-1/8"  | 13-1/2" | SSDØTY90         | 0.6      |
| 12"        | 7-3/4"  | 14-1/4" | SSD12TY90        | 0.6      |
| 14"        | 8-1/2"  | 15-7/8" | SSD14TY90        | 0.6      |
| 16"        | 9-1/4"  | 17-5/8" | SSD16TY90        | 0.6      |
| 18"        | 9-7/8"  | 18-3/8" | SSD18TY90        | 0.6      |
| 20"        | 10-5/8" | 21"     | SSD20TY90        | 0.6      |
| 22"        | 11-3/8" | 21-3/4" | SSD22TY90        | 0.6      |
| 24"        | 12"     | 22-1/2" | SSD24TY90        | 0.6      |

Available with smaller snout.

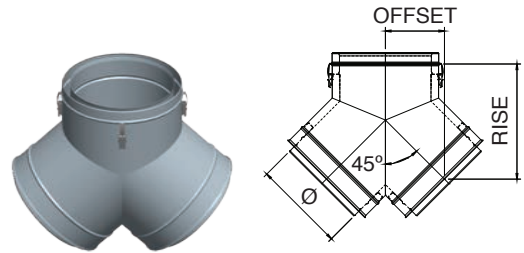


# SSD & SSID Venting Tees

## SSID 90-Degree Tee Y

| Ø        | Offset  | Rise    | Product Code SSID | K Factor |
|----------|---------|---------|-------------------|----------|
| 4"       | 5-5/8"  | 11-1/8" | SSID4TY90         | 0.6      |
| 5" to 6" | 6-3/8"  | 11-3/4" | SSIDØTY90         | 0.6      |
| 7" to 8" | 7-1/8"  | 13-1/2" | SSIDØTY90         | 0.6      |
| 10"      | 7-3/4"  | 14-1/4" | SSID10TY90        | 0.6      |
| 12"      | 8-1/2"  | 15-7/8" | SSID12TY90        | 0.6      |
| 14"      | 9-1/4"  | 17-5/8" | SSID14TY90        | 0.6      |
| 16"      | 9-7/8"  | 18-3/8" | SSID16TY90        | 0.6      |
| 18"      | 10-5/8" | 21"     | SSID18TY90        | 0.6      |
| 20"      | 11-3/8" | 21-3/4" | SSID20TY90        | 0.6      |
| 22"      | 12"     | 22-1/2" | SSID22TY90        | 0.6      |

Available with smaller snout. 9" and 24" not available.

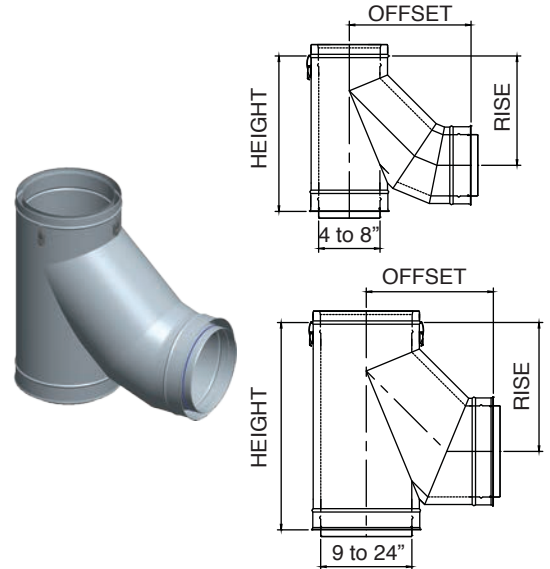


## SSD Lateral SecureTEE

Use to transition from horizontal to vertical with improved flue gas flow.

| Ø   | Height  | Offset  | Rise    | Product Code SSD | K Factor |
|-----|---------|---------|---------|------------------|----------|
| 3"  | 13-3/8" | 11-1/8" | 9"      | SSD3BT           | 0.55     |
| 4"  | 14-3/8" | 11-5/8" | 10"     | SSD4BT           | 0.55     |
| 5"  | 16-3/8" | 12-1/4" | 11"     | SSD5BT           | 0.55     |
| 6"  | 17-3/8" | 13-3/4" | 12-1/4" | SSD6BT           | 0.55     |
| 7"  | 19-3/8" | 14-3/4" | 13-1/4" | SSD7BT           | 0.55     |
| 8"  | 20-3/8" | 16"     | 14-3/8" | SSD8BT           | 0.55     |
| 9"  | 23-3/8" | 14-1/4" | 14-1/4" | SSD9BT           | 0.55     |
| 10" | 25-3/8" | 15-1/4" | 15-1/4" | SSD10BT          | 0.55     |
| 12" | 27-3/8" | 16-7/8" | 17"     | SSD12BT          | 0.55     |
| 14" | 30-3/8" | 18-7/8" | 18-7/8" | SSD14BT          | 0.55     |
| 16" | 33-3/8" | 20-3/4" | 20-3/4" | SSD16BT          | 0.55     |
| 18" | 38-1/8" | 22-1/2" | 22-1/2" | SSD18BT          | 0.55     |
| 20" | 42-1/8" | 24-3/4" | 24-3/8" | SSD20BT          | 0.55     |
| 22" | 45-1/8" | 26-1/4" | 26-1/4" | SSD22BT          | 0.55     |
| 24" | 51-1/8" | 28"     | 28-1/8" | SSD24BT          | 0.55     |

Available with smaller snout and custom height.



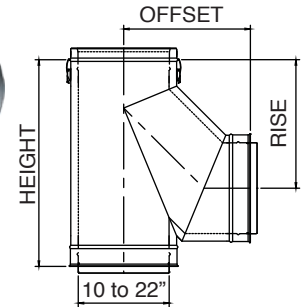
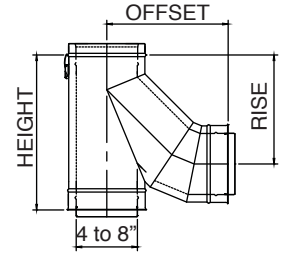
# SSD & SSID Venting Tees

## SSID Lateral SecureTEE

Use to transition from horizontal to vertical with improved flue gas flow. 9" and 24" not available.

| Ø   | Height  | Offset  | Rise    | Product Code SSID | K Factor |
|-----|---------|---------|---------|-------------------|----------|
| 4"  | 17-3/8" | 13-3/4" | 12-1/4" | SSID4BT           | 0.55     |
| 5"  | 19-3/8" | 14-3/4" | 13-1/4" | SSID5BT           | 0.55     |
| 6"  | 20-3/8" | 16"     | 14-3/8" | SSID6BT           | 0.55     |
| 7"  | 23-3/8" | 14-1/4" | 14-1/4" | SSID7BT           | 0.55     |
| 8"  | 25-3/8" | 15-1/4" | 15-1/4" | SSID8BT           | 0.55     |
| 10" | 27-3/8" | 16-7/8" | 17"     | SSID10BT          | 0.55     |
| 12" | 30-3/8" | 18-7/8" | 18-7/8" | SSID12BT          | 0.55     |
| 14" | 33-3/8" | 20-3/4" | 20-3/4" | SSID14BT          | 0.55     |
| 16" | 38-1/8" | 22-1/2" | 22-1/2" | SSID16BT          | 0.55     |
| 18" | 42-1/8" | 24-3/4" | 24-3/8" | SSID18BT          | 0.55     |
| 20" | 45-1/8" | 26-1/4" | 26-1/4" | SSID20BT          | 0.55     |
| 22" | 51-1/8" | 28"     | 28-1/8" | SSID22BT          | 0.55     |

Available with smaller snout and custom height.

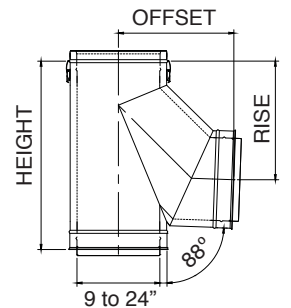
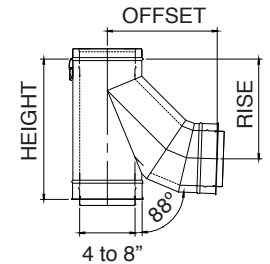


## SSD Lateral SecureTEE 88-Degree

Use to transition from horizontal to vertical with improved flue gas flow.

| Ø   | Height  | Offset  | Rise    | Product Code SSD | K Factor |
|-----|---------|---------|---------|------------------|----------|
| 3"  | 13-3/8" | 11-1/8" | 9"      | SSD3BT88         | 0.55     |
| 4"  | 14-3/8" | 11-5/8" | 10-1/4" | SSD4BT88         | 0.55     |
| 5"  | 16-3/8" | 12-1/4" | 11-3/8" | SSD5BT88         | 0.55     |
| 6"  | 17-3/8" | 13-3/4" | 12-3/4" | SSD6BT88         | 0.55     |
| 7"  | 19-3/8" | 14-7/8" | 13-3/4" | SSD7BT88         | 0.55     |
| 8"  | 20-3/8" | 16-1/8" | 15"     | SSD8BT88         | 0.55     |
| 9"  | 23-3/8" | 14-1/2" | 15-1/4" | SSD9BT88         | 0.55     |
| 10" | 25-3/8" | 15-3/8" | 16-1/8" | SSD10BT88        | 0.55     |
| 12" | 28-3/8" | 17"     | 17-7/8" | SSD12BT88        | 0.55     |
| 14" | 31-3/8" | 19-1/8" | 20-1/8" | SSD14BT88        | 0.55     |
| 16" | 33-3/8" | 21"     | 22"     | SSD16BT88        | 0.55     |
| 18" | 38-3/8" | 22-7/8" | 24"     | SSD18BT88        | 0.55     |
| 20" | 42-1/8" | 24-3/4" | 26"     | SSD20BT88        | 0.55     |
| 22" | 45-1/8" | 26-5/8" | 28"     | SSD22BT88        | 0.55     |
| 24" | 51-1/8" | 28-1/2" | 29-7/8" | SSD24BT88        | 0.55     |

Available with smaller snout and custom height.

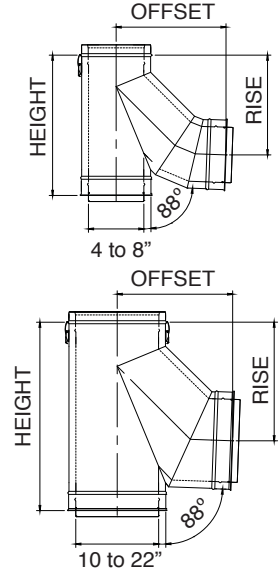


# SSD & SSID Venting Tees

## SSD Lateral SecureTEE 88-Degree

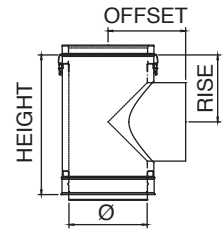
Use to transition from horizontal to vertical with improved flue gas flow. 9" and 24" not available.

| Ø   | Height  | Offset  | Rise    | Product Code<br>SSID | K<br>Factor |
|-----|---------|---------|---------|----------------------|-------------|
| 4"  | 17-3/8" | 13-3/4" | 12-3/4" | SSID4BT88            | 0.55        |
| 5"  | 19-3/8" | 14-7/8" | 13-3/4" | SSID5BT88            | 0.55        |
| 6"  | 20-3/8" | 16-1/8" | 15"     | SSID6BT88            | 0.55        |
| 7"  | 23-3/8" | 14-1/2" | 15-1/4" | SSID7BT88            | 0.55        |
| 8"  | 25-3/8" | 15-3/8" | 16-1/8" | SSID8BT88            | 0.55        |
| 10" | 28-3/8" | 17"     | 17-7/8" | SSID10BT88           | 0.55        |
| 12" | 31-3/8" | 19-1/8" | 20-1/8" | SSID12BT88           | 0.55        |
| 14" | 33-3/8" | 21"     | 22"     | SSID14BT88           | 0.55        |
| 16" | 38-3/8" | 22-7/8" | 24"     | SSID16BT88           | 0.55        |
| 18" | 42-1/8" | 24-3/4" | 26"     | SSID18BT88           | 0.55        |
| 20" | 45-1/8" | 26-5/8" | 28"     | SSID20BT88           | 0.55        |
| 22" | 51-1/8" | 28-1/2" | 29-7/8" | SSID22BT88           | 0.55        |



## SSD Barometric Tee

| Ø   | Height  | Offset | Rise    | Product Code<br>SSD | K<br>Factor |
|-----|---------|--------|---------|---------------------|-------------|
| 3"  | 12-1/2" | 8"     | 6"      | SSD3BMT             | 0.2         |
| 4"  | 13-1/2" | 8"     | 6-1/2"  | SSD4BMT             | 0.2         |
| 5"  | 14-1/2" | 9"     | 7"      | SSD5BMT             | 0.2         |
| 6"  | 15-1/2" | 9"     | 7-1/2"  | SSD6BMT             | 0.2         |
| 7"  | 16-1/2" | 10"    | 8"      | SSD7BMT             | 0.2         |
| 8"  | 17-1/2" | 10"    | 8-1/2"  | SSD8BMT             | 0.2         |
| 9"  | 18-1/2" | 11"    | 9"      | SSD9BMT             | 0.2         |
| 10" | 19-1/2" | 11"    | 9-1/2"  | SSD10BMT            | 0.2         |
| 12" | 21-1/2" | 12"    | 10-1/2" | SSD12BMT            | 0.2         |
| 14" | 23-1/2" | 13"    | 11-1/2" | SSD14BMT            | 0.2         |
| 16" | 25-1/2" | 14"    | 12-1/2" | SSD16BMT            | 0.2         |
| 18" | 27-1/2" | 15"    | 13-1/2" | SSD18BMT            | 0.2         |
| 20" | 29-1/2" | 16"    | 14-1/2" | SSD20BMT            | 0.2         |
| 22" | 31-1/2" | 17"    | 15-1/2" | SSD22BMT            | 0.2         |
| 24" | 33-1/2" | 18"    | 16-1/2" | SSD24BMT            | 0.2         |



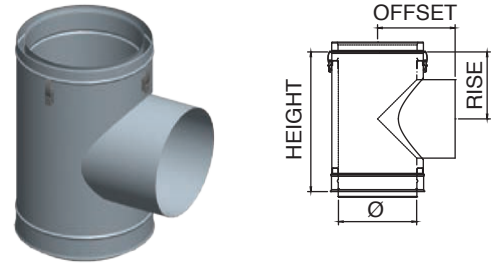
Available with smaller snout and custom height.

# SSD & SSID Venting Tees

## SSID Barometric Tee

| Ø   | Height  | Offset | Rise    | Product Code<br>SSID | K Factor |
|-----|---------|--------|---------|----------------------|----------|
| 4"  | 15-1/2" | 9"     | 7-1/2"  | SSID4BMT             | 0.2      |
| 5"  | 16-1/2" | 10"    | 8"      | SSID5BMT             | 0.2      |
| 6"  | 17-1/2" | 10"    | 8-1/2"  | SSID6BMT             | 0.2      |
| 7"  | 18-1/2" | 11"    | 9"      | SSID7BMT             | 0.2      |
| 8"  | 19-1/2" | 11"    | 9-1/2"  | SSID8BMT             | 0.2      |
| 10" | 21-1/2" | 12"    | 10-1/2" | SSID10BMT            | 0.2      |
| 12" | 23-1/2" | 13"    | 11-1/2" | SSID12BMT            | 0.2      |
| 14" | 25-1/2" | 14"    | 12-1/2" | SSID14BMT            | 0.2      |
| 16" | 27-1/2" | 15"    | 13-1/2" | SSID16BMT            | 0.2      |
| 18" | 29-1/2" | 16"    | 14-1/2" | SSID18BMT            | 0.2      |
| 20" | 31-1/2" | 17"    | 15-1/2" | SSID20BMT            | 0.2      |
| 22" | 33-1/2" | 18"    | 16-1/2" | SSID22BMT            | 0.2      |

Available with smaller snout and custom height. 9" and 24" not available.



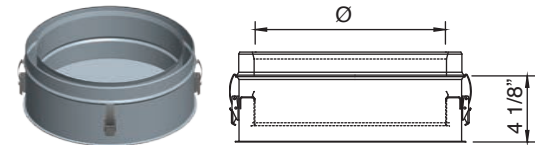
# SSD & SSID Venting Accessories

## SSD & SSID Tee Cap

Use to cap Standard Tee, Branch Tee or Boot Tee. Remove Tee Cap to inspect the system; clean out debris or collected condensate.

| Ø         | Height | Product Code<br>SSD | Product Code SSID |
|-----------|--------|---------------------|-------------------|
| 3" to 24" | 4-1/8" | SSDØTC              | SSIDØTC           |

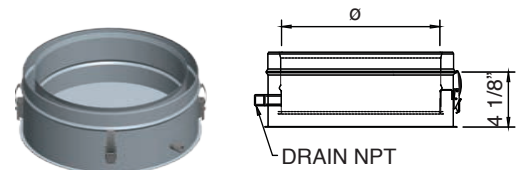
Note: SSID 3", 9" and 24" not available.



## SSD & SSID Drain Tee Cap

| Ø         | Height | Product Code<br>SSD | Product Code SSID |
|-----------|--------|---------------------|-------------------|
| 3" to 24" | 4-1/8" | SSDØDTC             | SSIDØDTC          |

Drain plug not included.  
 Drain Ø4 – Ø10, 1/4 NPT, 1/2 O.D.  
 Drain Ø12 – Ø24, 3/8 NPT, 5/8 O.D.  
 Note: SSID 3", 9" and 24" not available.



## SSD & SSID Barometric Tee Cap

| Ø         | Height | Product Code<br>SSD | Product Code SSID |
|-----------|--------|---------------------|-------------------|
| 3" to 24" | 3-1/2" | SSØBMT              | SSØBMT            |

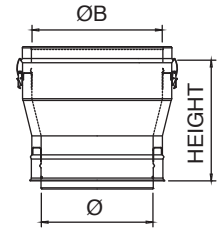


# SSD & SSID Venting Accessories

## SSD & SSID Tapered Inserter

Use to increase vent diameter. Creates a smooth transition for an undrruptive flow. Available in custom size combinations.

| Ø         | ØB Available | Height   | Product Code SSD | Product Code SSID | K Factor |
|-----------|--------------|----------|------------------|-------------------|----------|
| 3" to 9"  | Ø+1"         | 12-7/16" | SSDØTIN(ØB)      | SSIDØTIN(ØB)      | 0.05     |
| 4" to 22" | Ø+2"         | 13-7/16" | SSDØTIN(ØB)      | SSIDØTIN(ØB)      | 0.10     |
| 4" to 9"  | Ø+3"         | 14-7/16" | SSDØTIN(ØB)      | SSIDØTIN(ØB)      | 0.15     |
| 4" to 20" | Ø+4"         | 15-7/16" | SSDØTIN(ØB)      | SSIDØTIN(ØB)      | 0.20     |
| 4" to 7"  | Ø+5"         | 16-7/16" | SSDØTIN(ØB)      | SSIDØTIN(ØB)      | 0.25     |
| 4" to 18" | Ø+6"         | 17-7/16" | SSDØTIN(ØB)      | SSIDØTIN(ØB)      | 0.30     |

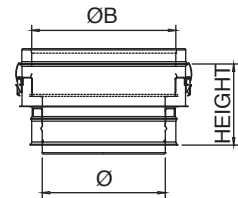


Note: SSID 9" and 24" not available.

## SSD & SSID Step Inserter

Use to increase vent diameter when space constraints are an issue. Available in custom size combinations.

| Ø         | ØB Available | Height | Product Code SSD | Product Code SSID | K Factor   |
|-----------|--------------|--------|------------------|-------------------|--|
| 3" to 22" | 5" to 24"    | 8"     | SSDØSIN(ØB)      | SSIDØSIN(ØB)      | $KØ = (1 - 2)^2$<br>$KØB = KØ / 4$<br>$= Ø / ØB$ |

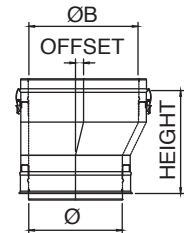


Note: SSID 3", 9" and 24" not available.

## SSD & SSID Eccentric Tapered Inserter

Use to transition to a larger diameter pipe. Prevents condensate puddling when used on horizontal runs. Aids in reducing formation of condensates. Maximum 10" difference between diameter increase size on both sizes. Available in custom size combinations.

| Ø         | ØB Available | Height  | Offset | Product Code SSD | Product Code SSID | K Factor |
|-----------|--------------|---------|--------|------------------|-------------------|----------|
| 3" to 9"  | Ø+1"         | 12-1/2" | 1/2"   | SSDØETIN(ØB)     | SSIDØETIN(ØB)     | 0.05     |
| 4" to 22" | Ø+2"         | 13-1/2" | 1"     | SSDØETIN(ØB)     | SSIDØETIN(ØB)     | 0.10     |
| 4" to 9"  | Ø+3"         | 14-1/2" | 1-1/2" | SSDØETIN(ØB)     | SSIDØETIN(ØB)     | 0.15     |
| 4" to 20" | Ø+4"         | 15-1/2" | 2"     | SSDØETIN(ØB)     | SSIDØETIN(ØB)     | 0.20     |
| 4" to 7"  | Ø+5"         | 16-1/2" | 2-1/2" | SSDØETIN(ØB)     | SSIDØETIN(ØB)     | 0.25     |
| 4" to 18" | Ø+6"         | 17-1/2" | 3"     | SSDØETIN(ØB)     | SSIDØETIN(ØB)     | 0.30     |

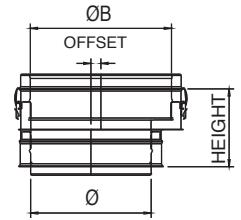


Note: SSID 3", 9" and 24" not available.

# SSD & SSID Venting Accessories

## SSD & SSID Eccentric Step Increaser

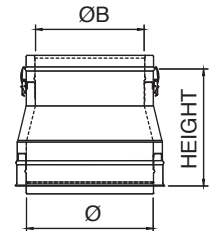
| Ø         | ØB Available | Height | Offset                   | Product Code SSD | Product Code SSID | K Factor   |
|-----------|--------------|--------|--------------------------|------------------|-------------------|--|
| 3" to 22" | 5" to 24"    | 8"     | $(\text{ØB}-\text{Ø})/2$ | SSDØESIN(ØB)     | SSIDØESIN(ØB)     | $K\text{Ø}=(1-2)^2$<br>$K\text{ØB}=K\text{Ø}^4$<br>$=\text{Ø}/\text{ØB}$ |



Note: SSID 3", 9" and 24" not available.

## SSD & SSID Tapered Reducer

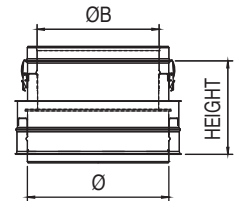
| Ø          | ØB Available | Height   | Product Code SSD | Product Code SSID | K Factor |
|------------|--------------|----------|------------------|-------------------|----------|
| 5" to 10"  | Ø-1"         | 12-7/16" | SSDØTRD(ØB)      | SSIDØTRD(ØB)      | 0.07     |
| 6" to 24"  | Ø-2"         | 13-7/16" | SSDØTRD(ØB)      | SSIDØTRD(ØB)      | 0.09     |
| 6" to 12"  | Ø-3"         | 14-7/16" | SSDØTRD(ØB)      | SSIDØTRD(ØB)      | 0.11     |
| 8" to 24"  | Ø-4"         | 15-7/16" | SSDØTRD(ØB)      | SSIDØTRD(ØB)      | 0.13     |
| 9" to 24"  | Ø-5"         | 16-7/16" | SSDØTRD(ØB)      | SSIDØTRD(ØB)      | 0.15     |
| 10" to 24" | Ø-6"         | 17-7/16" | SSDØTRD(ØB)      | SSIDØTRD(ØB)      | 0.17     |



Note: SSID 9" and 24" not available.

## SSD & SSID Step Reducer

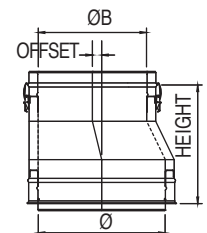
| Ø         | ØB Available | Height | Product Code SSD | Product Code SSID | K Factor   |
|-----------|--------------|--------|------------------|-------------------|--|
| 5" to 24" | 4" to 22"    | 8"     | SSDØSRD(ØB)      | SSIDØSRD(ØB)      | $K\text{ØB}=0.5(1-2)$<br>$K\text{Ø}=K\text{ØB}^4=\text{ØB}/\text{Ø}$ |



Note: SSID 9" and 24" not available.

## SSD & SSID Eccentric Tapered Reducer

| Ø          | ØB Available | Height  | Offset | Product Code SSD | Product Code SSID | K Factor |
|------------|--------------|---------|--------|------------------|-------------------|----------|
| 5" to 10"  | Ø-1"         | 12-1/2" | 1/2"   | SSDØETRD(ØB)     | SSIDØETRD(ØB)     | 0.07     |
| 6" to 24"  | Ø-2"         | 13-1/2" | 1"     | SSDØETRD(ØB)     | SSIDØETRD(ØB)     | 0.09     |
| 6" to 12"  | Ø-3"         | 14-1/2" | 1-1/2" | SSDØETRD(ØB)     | SSIDØETRD(ØB)     | 0.11     |
| 8" to 24"  | Ø-4"         | 15-1/2" | 2"     | SSDØETRD(ØB)     | SSIDØETRD(ØB)     | 0.13     |
| 9" to 24"  | Ø-5"         | 16-1/2" | 2-1/2" | SSDØETRD(ØB)     | SSIDØETRD(ØB)     | 0.15     |
| 10" to 24" | Ø-6"         | 17-1/2" | 3"     | SSDØETRD(ØB)     | SSIDØETRD(ØB)     | 0.17     |



Note: SSID 9" and 24" not available.

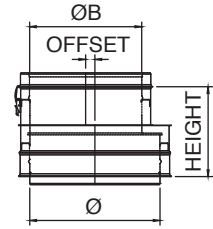
# SSD & SSID Venting Accessories

## SSD & SSID Eccentric Step Reducer

| Ø         | ØB Available | Height | Offset                   |
|-----------|--------------|--------|--------------------------|
| 5" to 24" | 4" to 22"    | 8"     | $(\text{Ø}-\text{ØB})/2$ |

| Product Code SSD | Product Code SSID | K Factor   |
|------------------|-------------------|--|
| SSDØESRD(ØB)     | SSIDØESRD(ØB)     | $K\text{ØB} = 0.5 (1 - ^2) K\text{Ø} = K\text{ØB} / ^4 = \text{ØB} / \text{Ø}$ |

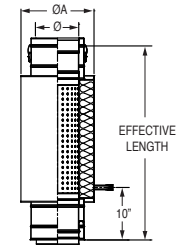
Note: SSID 9" and 24" not available.



## SSD Universal Muffler

Use to reduce the noise of an appliance. Install as a regular section in the evacuation line. No adaptors required. Drain plug not included.

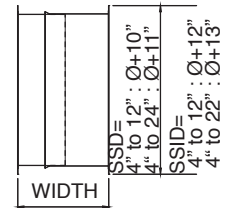
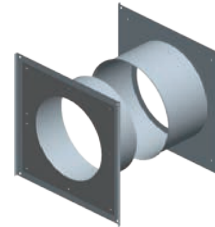
| Ø         | ØA         | Effective Length | Product Code |
|-----------|------------|------------------|--------------|
| 6" to 14" | 12" to 20" | 37"              | SSDØMUFFLERU |



## SSD & SSID Wall Thimble

| Ø         | Width     | Product Code SSD | Product Code SSID |
|-----------|-----------|------------------|-------------------|
| 3" to 24" | 9" to 17" | SSDØWT           | SSIDØWT           |

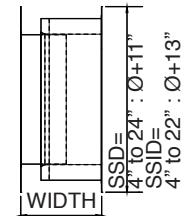
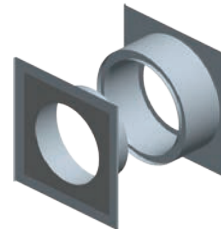
Note: SSID 3", 9" and 24" not available.  
Wall penetration opening dimensions available in the installation instructions manual.



## SSD & SSID Wall Thimble Insulated

| Ø         | Width     | Product Code SSD | Product Code SSID |
|-----------|-----------|------------------|-------------------|
| 3" to 24" | 9" to 17" | SSDØWTI          | SSIDØWTI          |

Note: SSID 3", 9" and 24" not available.  
Wall penetration opening dimensions available in the installation instructions manual.

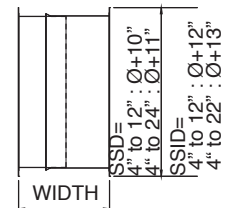
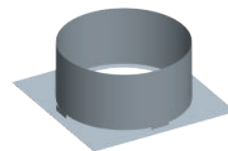


## SSD & SSID Roof Thimble

Use when penetrating floor/roof levels.

| Ø         | Width | Product Code SSD | Product Code SSID |
|-----------|-------|------------------|-------------------|
| 3" to 24" | 10"   | SSDØRTH          | SSIDØRTH          |

Note: SSID 3", 9" and 24" not available.  
Roof/floor penetration opening dimensions available in the installation instructions manual.



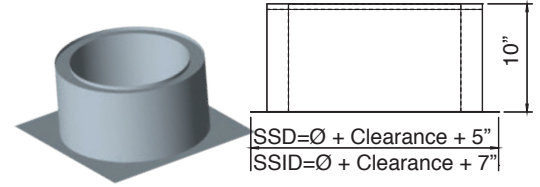


# SSD & SSID Venting Accessories

## SSD & SSID Roof Thimble Insulated

| Ø         | Width | Product Code SSD | Product Code SSID |
|-----------|-------|------------------|-------------------|
| 3" to 24" | 10"   | SSDØRTI          | SSIDØRTI          |

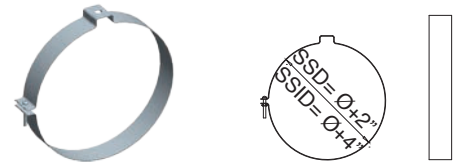
Note: SSID 3", 9" and 24" not available.  
Roof penetration opening dimensions available in the installation instructions manual.



## SSD & SSID Suspension Band

| Ø         | Product Code SSD | Product Code SSID |
|-----------|------------------|-------------------|
| 3" to 24" | SSDØSB           | SSIDØSB           |

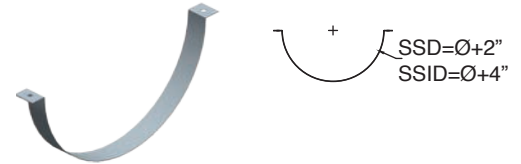
Note: SSID 3", 9" and 24" not available.



## SSD & SSID Cradle Support

| Ø         | Product Code SSD | Product Code SSID |
|-----------|------------------|-------------------|
| 3" to 24" | SSDØCS           | SSIDØCS           |

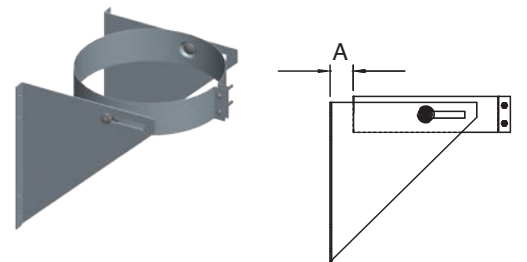
Note: SSID 3", 9" and 24" not available.



## SSD & SSID Wall Support

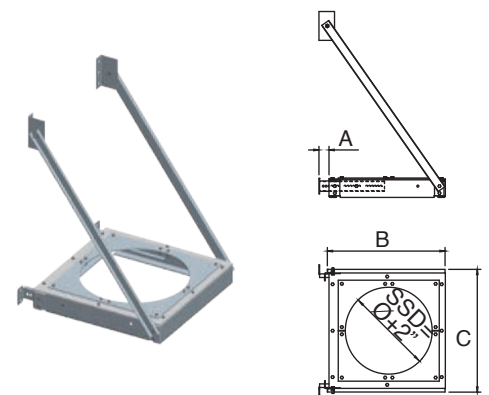
| Ø         | A        | Product Code SSD | Product Code SSID |
|-----------|----------|------------------|-------------------|
| 3" to 24" | 1" to 3" | SSDØWS           | SSIDØWS           |

Note: SSID 3", 9" and 24" not available.



## SSD Wall Support HD

| Ø   | A                | B   | C   | Product Code SSD |
|-----|------------------|-----|-----|------------------|
| 3"  | 1-1/2" to 6-1/2" | 8"  | 12" | SSD3WSHD         |
| 4"  | 1-1/2" to 6-1/2" | 9"  | 12" | SSD4WSHD         |
| 5"  | 1-1/2" to 6-1/2" | 10" | 12" | SSD5WSHD         |
| 6"  | 1-1/2" to 6-1/2" | 11" | 12" | SSD6WSHD         |
| 7"  | 1-1/2" to 6-1/2" | 12" | 14" | SSD7WSHD         |
| 8"  | 1-1/2" to 6-1/2" | 13" | 14" | SSD8WSHD         |
| 9"  | 1-1/2" to 6-1/2" | 14" | 14" | SSD9WSHD         |
| 10" | 1-1/2" to 6-1/2" | 15" | 16" | SSD10WSHD        |
| 12" | 1-1/2" to 6-1/2" | 17" | 16" | SSD12WSHD        |
| 14" | 1-1/2" to 6-1/2" | 19" | 22" | SSD14WSHD        |
| 16" | 1-1/2" to 6-1/2" | 21" | 22" | SSD16WSHD        |
| 18" | 1-1/2" to 6-1/2" | 23" | 26" | SSD18WSHD        |
| 20" | 1-1/2" to 6-1/2" | 25" | 30" | SSD20WSHD        |
| 22" | 1-1/2" to 6-1/2" | 27" | 30" | SSD22WSHD        |
| 24" | 1-1/2" to 6-1/2" | 29" | 30" | SSD24WSHD        |

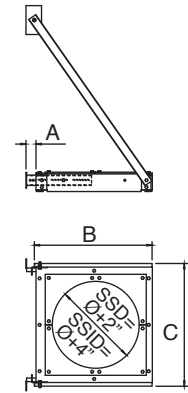


## SSID Wall Support HD

# SSD & SSID Venting Accessories

| Ø   | A                | B   | C   | Product Code SSID |
|-----|------------------|-----|-----|-------------------|
| 4"  | 1-1/2" to 6-1/2" | 11" | 12" | SSID4WSHD         |
| 5"  | 1-1/2" to 6-1/2" | 12" | 14" | SSID5WSHD         |
| 6"  | 1-1/2" to 6-1/2" | 13" | 14" | SSID6WSHD         |
| 7"  | 1-1/2" to 6-1/2" | 14" | 14" | SSID7WSHD         |
| 8"  | 1-1/2" to 6-1/2" | 15" | 16" | SSID8WSHD         |
| 10" | 1-1/2" to 6-1/2" | 17" | 16" | SSID10WSHD        |
| 12" | 1-1/2" to 6-1/2" | 19" | 22" | SSID12WSHD        |
| 14" | 1-1/2" to 6-1/2" | 21" | 22" | SSID14WSHD        |
| 16" | 1-1/2" to 6-1/2" | 23" | 26" | SSID16WSHD        |
| 18" | 1-1/2" to 6-1/2" | 25" | 30" | SSID18WSHD        |
| 20" | 1-1/2" to 6-1/2" | 27" | 30" | SSID20WSHD        |
| 22" | 1-1/2" to 6-1/2" | 29" | 30" | SSID22WSHD        |

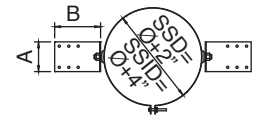
9" and 24" not available.



## SSD & SSID Roof Support

| Ø         | A      | B      | Product Code SSD | Product Code SSID |
|-----------|--------|--------|------------------|-------------------|
| 3" to 24" | 6-1/2" | 7-5/8" | SSDØRS           | SSIDØRS           |

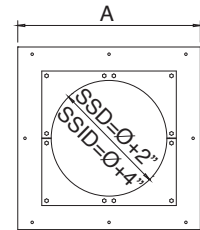
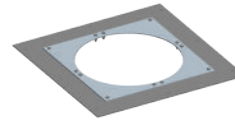
Note: SSID 3", 9" and 24" not available.



## SSD & SSID Anchor Plate

| Ø         | A (SSD) | Product Code SSD | A (SSID) | Product Code SSID |
|-----------|---------|------------------|----------|-------------------|
| 3" to 24" | Ø+7"    | SSDØAP           | Ø+9"     | SSIDØAP           |

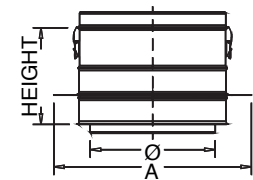
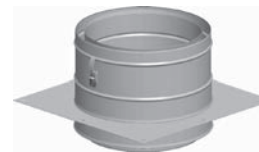
Note: SSID 3", 9" and 24" not available.



## SSD & SSID Length Anchor Plate

| Ø         | A (SSD) | Product Code SSD | A (SSID) | Product Code SSID |
|-----------|---------|------------------|----------|-------------------|
| 3" to 24" | Ø+7"    | SSDØAPL          | Ø+9"     | SSIDØAPL          |

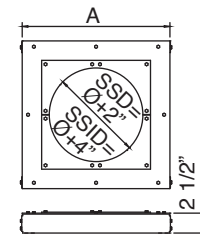
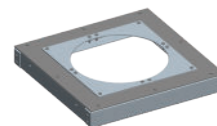
Note: SSID 3", 9" and 24" not available.



## SSD & SSID Anchor Plate HD

| Ø         | A (SSD) | Product Code SSD | A (SSID) | Product Code SSID |
|-----------|---------|------------------|----------|-------------------|
| 3" to 24" | Ø+7"    | SSDØAPHD         | Ø+9"     | SSIDØAPHD         |

Note: SSID 3", 9" and 24" not available.

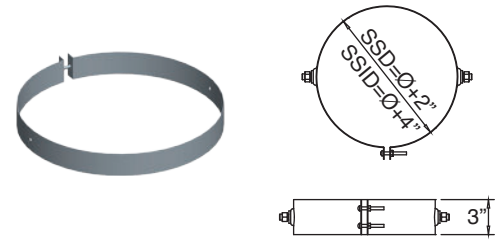


# SSD & SSID Venting Accessories

## SSD & SSID Roof Brace

| Ø         | Product Code SSD | Product Code SSID |
|-----------|------------------|-------------------|
| 3" to 24" | SSDØRB           | SSIDØRB           |

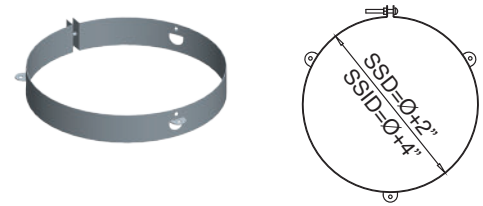
Note: SSID 3", 9" and 24" not available.



## SSD & SSID Guy Wire Band

| Ø         | Product Code SSD | Product Code SSID |
|-----------|------------------|-------------------|
| 3" to 24" | SSDØGWB          | SSIDØGWB          |

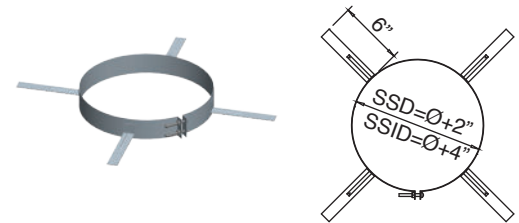
Note: SSID 3", 9" and 24" not available.



## SSD & SSID Centering Band

| Ø         | Product Code SSD | Product Code SSID |
|-----------|------------------|-------------------|
| 3" to 24" | SSDØCB           | SSIDØCB           |

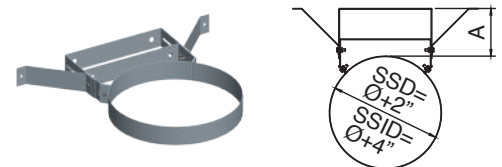
Note: SSID 3", 9" and 24" not available.



## SSD & SSID Wall Guide

| Ø         | A            | Product Code SSD | Product Code SSID |
|-----------|--------------|------------------|-------------------|
| 3" to 24" | 1" to 4-1/2" | SSDØWG           | SSIDØWG           |

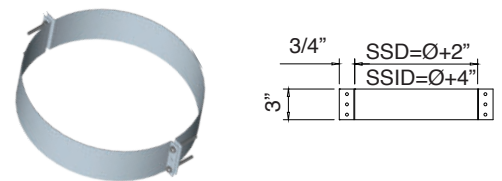
Note: SSID 3", 9" and 24" not available.



## SSD & SSID Guy Support

| Ø         | Product Code SSD | Product Code SSID |
|-----------|------------------|-------------------|
| 3" to 24" | SSDØGS           | SSIDØGS           |

Note: SSID 3", 9" and 24" not available.

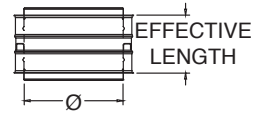
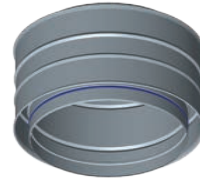


# SSD & SSID Venting Accessories

## SSD & SSID Double Male Adaptor

| Ø         | Effective Length | Product Code SSD | Product Code SSID |
|-----------|------------------|------------------|-------------------|
| 3" to 24" | 7-1/8"           | SSDØDMA          | SSIDØDMA          |

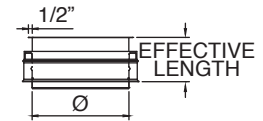
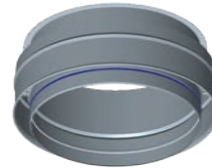
Note: SSID 3", 9" and 24" not available.



## SSD & SSID Male Flange Adaptor

| Ø         | Effective Length | Product Code SSD | Product Code SSID |
|-----------|------------------|------------------|-------------------|
| 3" to 24" | 5-1/2"           | SSDØMFA          | SSIDØMFA          |

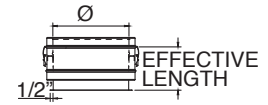
Includes V-bands, except in 3" and 4" diameters.



## SSD & SSID Female Flange Adaptor

| Ø         | Effective Length | Product Code SSD | Product Code SSID |
|-----------|------------------|------------------|-------------------|
| 3" to 24" | 6-7/8"           | SSDØFFA          | SSIDØFFA          |

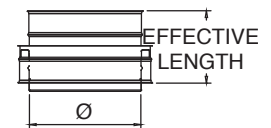
Note: SSID 3", 9" and 24" not available.  
Includes V-bands, except in 3" and 4" diameters.



## SSD & SSID to SS Adaptor

| Ø         | Effective Length | Product Code SSD | Product Code SSID |
|-----------|------------------|------------------|-------------------|
| 3" to 24" | 7-7/8"           | SSDØSSA          | SSIDØSSA          |

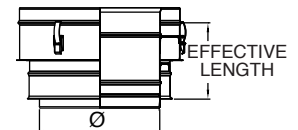
Note: SSID 3", 9" and 24" not available.



## SSD to SSID Adaptor

| Ø         | Effective Length | Product Code SSD |
|-----------|------------------|------------------|
| 3" to 24" | 7-5/8"           | SSDØSSIDA        |

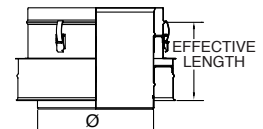
Note: SSID 3", 9" and 24" not available.



## SSID to SSD Adaptor

| Ø         | Effective Length | Product Code SSD |
|-----------|------------------|------------------|
| 3" to 24" | 8-1/8"           | SSIDØSSDA        |

Note: SSID 3", 9" and 24" not available.

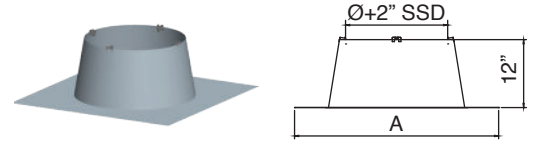


# SSD & SSID Venting Accessories

## SSD Flat Flashing

Use to create a weather tight penetration where the vent passes through the roof.

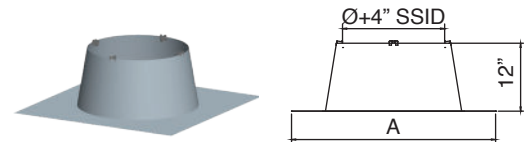
| Ø   | A   | Product Code SSD |
|-----|-----|------------------|
| 3"  | 14" | SSD3F            |
| 4"  | 16" | SSD4F            |
| 5"  | 18" | SSD5F            |
| 6"  | 26" | SSD6F            |
| 7"  | 26" | SSD7F            |
| 8"  | 28" | SSD8F            |
| 9"  | 30" | SSD9F            |
| 10" | 30" | SSD10F           |
| 12" | 31" | SSD12F           |
| 14" | 34" | SSD14F           |
| 16" | 36" | SSD16F           |
| 18" | 38" | SSD18F           |
| 20" | 40" | SSD20F           |
| 22" | 42" | SSD22F           |
| 24" | 44" | SSD24F           |



## SSID Flat Flashing

Use to create a weather tight penetration where the vent passes through the roof.  
9" and 24" not available.

| Ø   | A   | Product Code SSID |
|-----|-----|-------------------|
| 4"  | 26" | SSID4F            |
| 5"  | 26" | SSID5F            |
| 6"  | 28" | SSID6F            |
| 7"  | 30" | SSID7F            |
| 8"  | 30" | SSID8F            |
| 10" | 31" | SSID10F           |
| 12" | 34" | SSID12F           |
| 14" | 36" | SSID14F           |
| 16" | 38" | SSID16F           |
| 18" | 40" | SSID18F           |
| 20" | 42" | SSID20F           |
| 22" | 44" | SSID22F           |

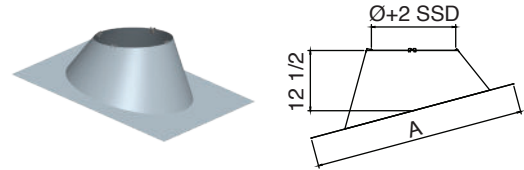


# SSD & SSID Venting Accessories

## SSD Adjustable Flashing

| Ø   | A       | Height  | Product Code SSD |
|-----|---------|---------|------------------|
| 3"  | 32"     | 12-1/2" | SSD3FA           |
| 4"  | 32"     | 12-1/2" | SSD4FA           |
| 5"  | 32"     | 12-1/2" | SSD5FA           |
| 6"  | 34"     | 12-1/2" | SSD6FA           |
| 7"  | 35-3/8" | 12-1/2" | SSD7FA           |
| 8"  | 36-1/2" | 12-1/2" | SSD8FA           |
| 9"  | 38"     | 12-1/2" | SSD9FA           |
| 10" | 38-1/2" | 12-1/2" | SSD10FA          |
| 12" | 41"     | 12-1/2" | SSD12FA          |
| 14" | 43"     | 12-1/2" | SSD14FA          |
| 16" | 45"     | 12-1/2" | SSD16FA          |
| 18" | 47-1/4" | 12-1/2" | SSD18FA          |
| 20" | 49-1/2" | 12-1/2" | SSD20FA          |
| 22" | 51-1/2" | 12-1/2" | SSD22FA          |
| 24" | 53-1/2" | 12-1/2" | SSD24FA          |

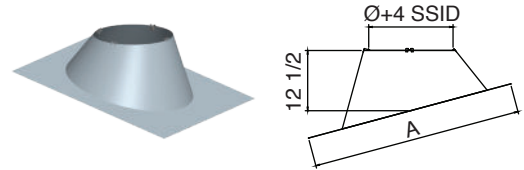
Adjustable from 5° to 30°. Roof pitch 1/12" to 7/12".



## SSID Adjustable Flashing

| Ø   | A       | Height  | Product Code SSID |
|-----|---------|---------|-------------------|
| 4"  | 34"     | 12-1/2" | SSID4FA           |
| 5"  | 35-3/8" | 12-1/2" | SSID5FA           |
| 6"  | 36-1/2" | 12-1/2" | SSID6FA           |
| 7"  | 38"     | 12-1/2" | SSID7FA           |
| 8"  | 38-1/2" | 12-1/2" | SSID8FA           |
| 10" | 41"     | 12-1/2" | SSID10FA          |
| 12" | 43"     | 12-1/2" | SSID12FA          |
| 14" | 45"     | 12-1/2" | SSID14FA          |
| 16" | 47-1/4" | 12-1/2" | SSID16FA          |
| 18" | 49-1/2" | 12-1/2" | SSID18FA          |
| 20" | 51-1/2" | 12-1/2" | SSID20FA          |
| 22" | 53-1/2" | 12-1/2" | SSID22FA          |

Adjustable from 5° to 30°. Roof pitch 1/12" to 7/12".  
9" and 24" not available.

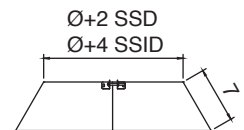
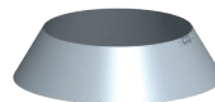


## SSD & SSID Storm Collar

Use to create a weather tight seal between the pipe and flashing.

| Ø         | Product Code SSD | Product Code SSID |
|-----------|------------------|-------------------|
| 3" to 24" | SSDØSCH          | SSIDØSC           |

Note: SSID 3", 9" and 24" not available.



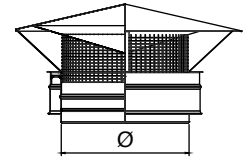
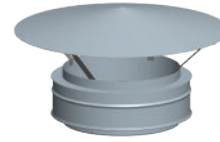
# SSD & SSID Venting Terminations

## SSD & SSID Rain Cap

Use to terminate above the roof line. Not recommended in cold climate as condensate can freeze on cap.

| Ø         | Product Code SSD | Product Code SSD w/ Bird Screen | K Factor | Product Code SSID | Product Code w/ SSID Bird Screen |
|-----------|------------------|---------------------------------|----------|-------------------|----------------------------------|
| 3" to 24" | SSDØRC           | SSDØRCB                         | .50      | SSIDØRC           | SSIDØRCB                         |

Note: SSID 3", 9" and 24" not available.

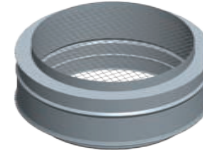


## SSD & SSID Screened Termination

Use for horizontal through-the-wall terminations. Check installation instructions for restrictions on horizontal terminations, such as minimum distance from windows and doors.

| Ø         | Product Code SSD | Product Code SSID | K Factor |
|-----------|------------------|-------------------|----------|
| 3" to 24" | SSDØST           | SSIDØST           | .14      |

Note: SSID 3", 9" and 24" not available.

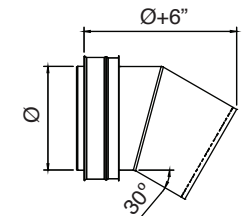
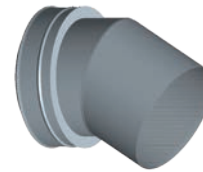


## SSD & SSID 30° Screen Termination

Use for through-the-wall termination. Deters rain and other elements from entering the vent system. Check installation instructions for restrictions on horizontal terminations, such as minimum distance from windows and doors.

| Ø         | Product Code SSD | Product Code SSID | K Factor |
|-----------|------------------|-------------------|----------|
| 3" to 24" | SSDØSTA          | SSIDØSTA          | .70      |

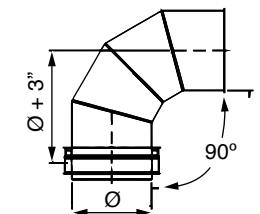
Note: SSID 3", 9" and 24" not available.



## SSD 90° Screen Termination

Use for through-the-wall termination. Deters rain and other elements from entering the vent system. Check installation instructions for restrictions on horizontal terminations, such as minimum distance from windows and doors.

| Ø         | Product Code | K Factor |
|-----------|--------------|----------|
| 3" to 10" | SSDØST90A    | .50      |

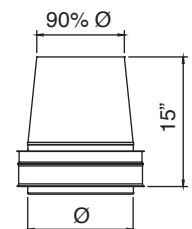


## SSD & SSID Exit Cone

Use for vertical termination. Creates static back pressure to adjust harmonics. Venturi effect increases velocity of flue gases. Reduced opening provides for a smaller cross section to deter rain from entering the system.

| Ø         | Product Code SSD | Product Code SSID | K Factor |
|-----------|------------------|-------------------|----------|
| 3" to 24" | SSDØEC           | SSIDØEC           | .60      |

Note: SSID 3", 9" and 24" not available.



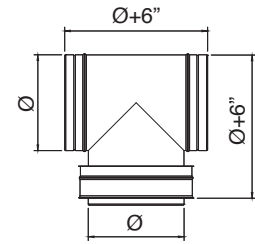
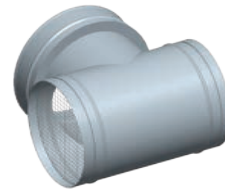
# SSD & SSID Venting Terminations

## SSD & SSID Termination Tee With Screen

Use for standard and high-wind through-the-wall terminations. Check installation instructions for restrictions on horizontal terminations, such as minimum distance from windows and doors.

| Ø         | Product Code SSD | Product Code SSID | K Factor |
|-----------|------------------|-------------------|----------|
| 3" to 24" | SSDØTT           | SSIDØTT           | .35      |

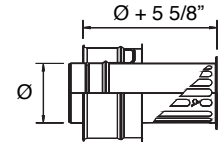
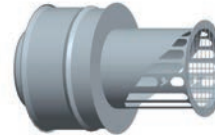
Note: SSID 3", 9" and 24" not available.



## SSD & SSID Mitter Cut

| Ø         | Product Code SSD | Product Code SSID | K Factor |
|-----------|------------------|-------------------|----------|
| 3" to 24" | SSDØMC           | SSIDØMC           | .14      |

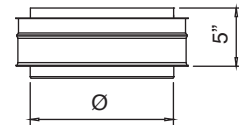
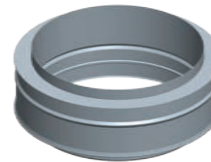
Note: SSID 3", 9" and 24" not available.



## SSD & SSID Closer Termination

| Ø         | Product Code SSD | Product Code SSID | K Factor |
|-----------|------------------|-------------------|----------|
| 3" to 24" | SSDØCT           | SSIDØCT           | 0        |

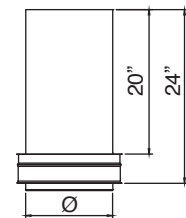
Note: SSID 3", 9" and 24" not available.



## SSD & SSID OEM Termination

| Ø         | Product Code SSD | Product Code SSID | K Factor |
|-----------|------------------|-------------------|----------|
| 3" to 24" | SSDØEMTA         | SSIDØEMTA         | 0        |

Note: SSID 3", 9" and 24" not available.





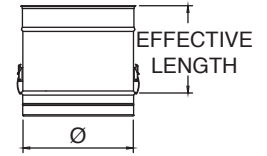
# SS Venting Lengths

## SS Lengths

Use to vent category II, III and IV appliances.

| Ø         | Effective Length | Product Code |
|-----------|------------------|--------------|
| 3" to 24" | 6-1/2"           | SSØL9        |
| 3" to 24" | 9-1/2"           | SSØL12       |
| 3" to 24" | 15-1/2"          | SSØL18       |
| 3" to 24" | 21-1/2"          | SSØL24       |
| 3" to 24" | 33-1/2"          | SSØL36       |
| 5" to 9"  | 45-1/2"          | SSØL48       |

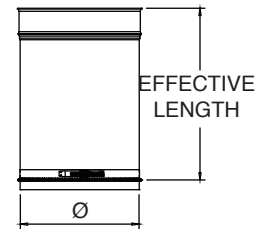
Note: SSØL48 only available in 316 material.



## SS Adjustable Lengths

Use to add length to straight length of SS pipe. Adds 2"–14" of length. Requires at least 4" overlap for a secure connection.

| Ø         | Effective Length | Product Code |
|-----------|------------------|--------------|
| 3" to 24" | 4" to 5"         | SSØAL9       |
| 3" to 24" | 4" to 14"        | SSØAL18      |

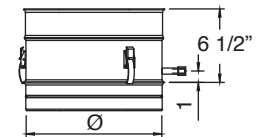
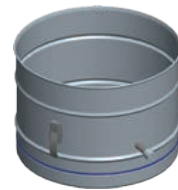


## SS Test Port Lengths

Use to test for proper appliance operation without penetrating the vent wall. Easy access to perform flue gas analysis. Test port plug included.

| Ø         | Effective Length | Product Code |
|-----------|------------------|--------------|
| 3" to 24" | 6-1/2"           | SSØTPL       |

Drain Ø4 – Ø24, 1/4 NPT, 1/2 O.D

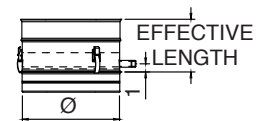
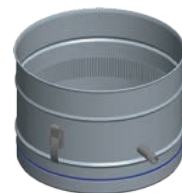


## SS Drain Length

Use to properly manage corrosive condensates common with high efficiency gas appliances. For best results, install close to the appliance. Can be used horizontally, vertically, or any angle in between. Drain plug not included.

| Ø         | Effective Length | Product Code | K Factor |
|-----------|------------------|--------------|----------|
| 3" to 24" | 6-1/2"           | SSØDL        | 0.25     |

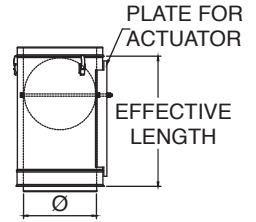
Drain Ø4 – Ø10, 1/4 NPT, 1/2 O.D  
Drain Ø12 – Ø24, 1/2 NPT, 5/8 O.D



# SS Venting Lengths

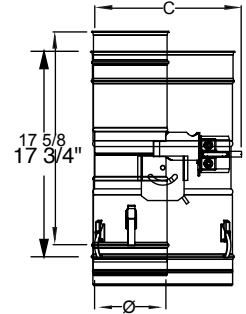
## SS Damper Lengths

| Ø         | Effective Length | Product Code | K Factor     |
|-----------|------------------|--------------|--------------|
| 3" to 24" | 21-3/16"         | SSØDAMP      | 0.60 to 9999 |



## SS K&W Fixed Blade Damper Lengths

| Ø         | Effective Length | Product Code |
|-----------|------------------|--------------|
| 6" to 18" | 17-3/4"          | SSØKWDAMP    |



## SS Motorized Damper Lengths

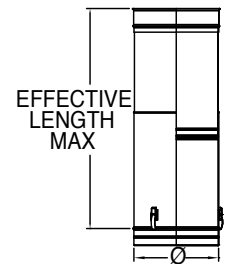
| Ø         | Effective Length | Product Code |
|-----------|------------------|--------------|
| 3" to 18" | 17-5/8"          | SSØMOTDAMP   |

Note: SS 5", 7", 9", 11", 13", 15", and 17" not available.

## SS Telescopic Length

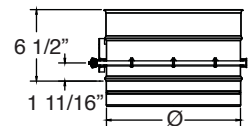
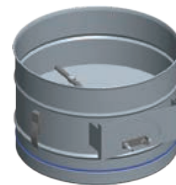
Telescopic lengths do not require cutting to fit dimension.

| Ø         | Effective Length | Product Code   |                |
|-----------|------------------|----------------|----------------|
|           |                  | 32" Telescopic | 20" Telescopic |
| 3" to 24" | 14" to 20"       | SSØLAT32       | SSØLAT20       |
| 3" to 24" | 20" to 32"       | SSØLAT32       | SSØLAT20       |



## SS Damper Length Short

| Ø         | Effective Length | Product Code | K Factor  |
|-----------|------------------|--------------|-----------|
| 3" to 24" | 6-3/16"          | SSØDAMPS     | 0 to 9999 |

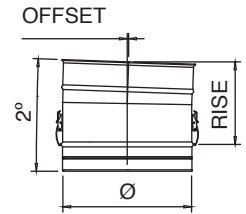


# SS Venting Elbows

## SS 2-Degree Elbow

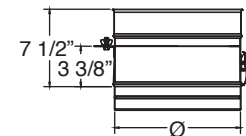
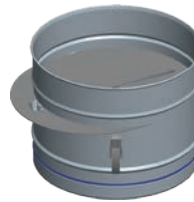
Offsets obstructions as needed. Allows for better condensate management and less back pressure.

| Ø          | Offset | Rise   | Product Code | K Factor |
|------------|--------|--------|--------------|----------|
| 3" to 4"   | 1/8"   | 7-1/8" | SSØE2        | 0.04     |
| 5" to 8"   | 1/8"   | 7-1/4" | SSØE2        | 0.04     |
| 9" to 12"  | 1/8"   | 7-3/8" | SSØE2        | 0.04     |
| 14"        | 1/8"   | 7-1/2" | SS14E2       | 0.03     |
| 16" to 18" | 1/8"   | 7-5/8" | SSØE2        | 0.03     |
| 20" to 22" | 1/8"   | 7-3/4" | SSØE2        | 0.03     |
| 24"        | 1/8"   | 7-7/8" | SS24E2       | 0.03     |



## SS Vent Flow Regulator

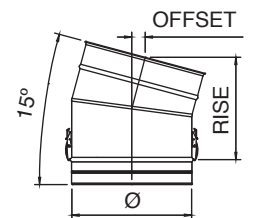
| Ø         | Effective Length | Product Code | K Factor  |
|-----------|------------------|--------------|-----------|
| 3" to 24" | 7-1/8"           | SSØVFR       | 0 to 9999 |



## SS 15-Degree Elbow

Offsets obstructions as needed. Allows for better condensate management and less back pressure.

| Ø   | Offset | Rise    | Product Code | K Factor |
|-----|--------|---------|--------------|----------|
| 3"  | 1"     | 7-5/8"  | SS3E15       | 0.32     |
| 4"  | 1"     | 7-7/8"  | SS4E15       | 0.31     |
| 5"  | 1-1/8" | 8-1/4"  | SS5E15       | 0.30     |
| 6"  | 1-1/8" | 8-1/2"  | SS6E15       | 0.30     |
| 7"  | 1-1/8" | 8-3/4"  | SS7E15       | 0.29     |
| 8"  | 1-1/4" | 9"      | SS8E15       | 0.29     |
| 9"  | 1-1/4" | 9-1/4"  | SS9E15       | 0.28     |
| 10" | 1-1/4" | 9-1/2"  | SS10E15      | 0.28     |
| 12" | 1-3/8" | 10"     | SS12E15      | 0.27     |
| 14" | 1-3/8" | 10-1/2" | SS14E15      | 0.27     |
| 16" | 1-1/2" | 11"     | SS16E15      | 0.26     |
| 18" | 1-1/2" | 11-1/2" | SS18E15      | 0.26     |
| 20" | 1-5/8" | 12-1/8" | SS20E15      | 0.26     |
| 22" | 1-5/8" | 12-5/8" | SS22E15      | 0.26     |
| 24" | 1-3/4" | 13-1/8" | SS24E15      | 0.26     |

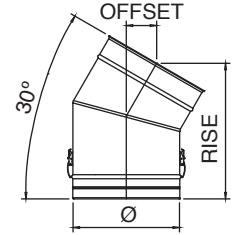


# SS Venting Elbows

## SS 30-Degree Elbow

Offsets obstructions as needed. Allows for better condensate management and less back pressure.

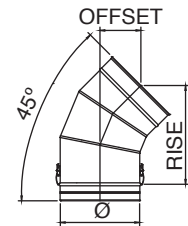
| Ø   | Offset | Rise    | Product Code | K Factor |
|-----|--------|---------|--------------|----------|
| 3"  | 2-1/8" | 8"      | SS3E30       | 0.62     |
| 4"  | 2-1/4" | 8-1/2"  | SS4E30       | 0.61     |
| 5"  | 2-3/8" | 9"      | SS5E30       | 0.60     |
| 6"  | 2-5/8" | 9-1/2"  | SS6E30       | 0.59     |
| 7"  | 2-3/4" | 10"     | SS7E30       | 0.58     |
| 8"  | 2-7/8" | 10-1/2" | SS8E30       | 0.57     |
| 9"  | 3"     | 11"     | SS9E30       | 0.56     |
| 10" | 3-1/8" | 11-1/2" | SS10E30      | 0.55     |
| 12" | 3-3/8" | 12-1/2" | SS12E30      | 0.54     |
| 14" | 3-5/8" | 13-1/2" | SS14E30      | 0.54     |
| 16" | 3-7/8" | 14-1/2" | SS16E30      | 0.53     |
| 18" | 4-1/8" | 15-1/2" | SS18E30      | 0.52     |
| 20" | 4-1/2" | 16-1/2" | SS20E30      | 0.52     |
| 22" | 4-3/4" | 17-1/2" | SS22E30      | 0.51     |
| 24" | 5"     | 18-1/2" | SS24E30      | 0.51     |



## SS 45-Degree Elbow

Offsets obstructions as needed. Allows for better condensate management and less back pressure.

| Ø   | Offset | Rise    | Product Code | K Factor |
|-----|--------|---------|--------------|----------|
| 3"  | 3-3/8" | 8-1/8"  | SS3E45       | 0.30     |
| 4"  | 4-1/4" | 10-1/4" | SS4E45       | 0.26     |
| 5"  | 4"     | 9-1/2"  | SS5E45       | 0.22     |
| 6"  | 4-1/4" | 10-1/2" | SS6E45       | 0.17     |
| 7"  | 4-1/2" | 10-7/8" | SS7E45       | 0.16     |
| 8"  | 4-7/8" | 11-5/8" | SS8E45       | 0.14     |
| 9"  | 5-1/8" | 12-3/8" | SS9E45       | 0.13     |
| 10" | 5-3/8" | 13"     | SS10E45      | 0.12     |
| 12" | 6"     | 14-1/2" | SS12E45      | 0.11     |
| 14" | 6-5/8" | 15-7/8" | SS14E45      | 0.11     |
| 16" | 7-1/8" | 17-1/4" | SS16E45      | 0.10     |
| 18" | 7-3/4" | 18-3/4" | SS18E45      | 0.09     |
| 20" | 8-3/8" | 20-1/8" | SS20E45      | 0.08     |
| 22" | 8-7/8" | 21-1/2" | SS22E45      | 0.08     |
| 24" | 9-1/2" | 23"     | SS24E45      | 0.08     |

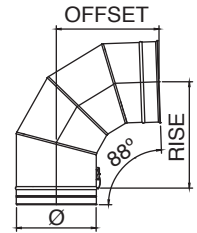


# SS Venting Elbows

## SS 88-Degree Elbow

Offsets obstructions as needed. Allows for better condensate management and less back pressure.

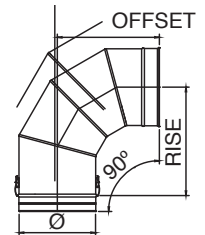
| Ø   | Offset  | Rise    | Product Code | K Factor |
|-----|---------|---------|--------------|----------|
| 3"  | 6-3/8"  | 6-5/8"  | SS3E88       | 0.60     |
| 4"  | 7-3/8"  | 7-5/8"  | SS4E88       | 0.54     |
| 5"  | 8-3/8"  | 8-5/8"  | SS5E88       | 0.48     |
| 6"  | 9-1/4"  | 9-5/8"  | SS6E88       | 0.42     |
| 7"  | 10-1/4" | 10-5/8" | SS7E88       | 0.39     |
| 8"  | 11-1/4" | 11-5/8" | SS8E88       | 0.37     |
| 9"  | 12-1/4" | 12-5/8" | SS9E88       | 0.34     |
| 10" | 13-1/8" | 13-5/8" | SS10E88      | 0.32     |
| 12" | 15-1/8" | 15-5/8" | SS12E88      | 0.29     |
| 14" | 17"     | 17-5/8" | SS14E88      | 0.27     |
| 16" | 19"     | 19-5/8" | SS16E88      | 0.25     |
| 18" | 20-7/8" | 21-5/8" | SS18E88      | 0.24     |
| 20" | 22-7/8" | 23-5/8" | SS20E88      | 0.23     |
| 22" | 24-3/4" | 25-5/8" | SS22E88      | 0.21     |
| 24" | 26-5/8" | 27-5/8" | SS24E88      | 0.20     |



## SS 90-Degree Elbow

Use to go from horizontal to vertical runs or vertical to horizontal runs. Use to turn vent 90°.

| Ø   | Offset  | Rise    | Product Code | K Factor |
|-----|---------|---------|--------------|----------|
| 3"  | 6-1/2"  | 6-1/2"  | SS3E90       | 0.60     |
| 4"  | 7-1/2"  | 7-1/2"  | SS4E90       | 0.54     |
| 5"  | 8-1/2"  | 8-1/2"  | SS5E90       | 0.48     |
| 6"  | 9-1/2"  | 9-1/2"  | SS6E90       | 0.42     |
| 7"  | 10-1/2" | 10-1/2" | SS7E90       | 0.39     |
| 8"  | 11-1/2" | 11-1/2" | SS8E90       | 0.37     |
| 9"  | 12-1/2" | 12-1/2" | SS9E90       | 0.34     |
| 10" | 13-1/2" | 13-1/2" | SS10E90      | 0.32     |
| 12" | 15-1/2" | 15-1/2" | SS12E90      | 0.29     |
| 14" | 17-1/2" | 17-1/2" | SS14E90      | 0.27     |
| 16" | 19-1/2" | 19-1/2" | SS16E90      | 0.25     |
| 18" | 21-1/2" | 21-1/2" | SS18E90      | 0.24     |
| 20" | 23-1/2" | 23-1/2" | SS20E90      | 0.23     |
| 22" | 25-1/2" | 25-1/2" | SS22E90      | 0.21     |
| 24" | 27-1/2" | 27-1/2" | SS24E90      | 0.20     |

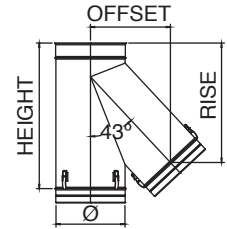


# SS Venting Tees

## SS 43-Degree Tee

Use in place of any tee for a 43° angle instead of 90°; can be used as a manifold connection to gang multiple boilers into a common vent.

| Ø   | Height  | Offset  | Rise    | Product Code | K Factor |
|-----|---------|---------|---------|--------------|----------|
| 3"  | 13-1/4" | 5-1/2"  | 10-3/8" | SS3T43       | 0.4      |
| 4"  | 14-1/4" | 6-3/8"  | 11-1/8" | SS4T43       | 0.4      |
| 5"  | 15-1/4" | 7-3/4"  | 12-7/8" | SS5T43       | 0.4      |
| 6"  | 17-1/4" | 8-1/2"  | 13-3/4" | SS6T43       | 0.4      |
| 7"  | 18-1/4" | 9-1/8"  | 14-3/4" | SS7T43       | 0.4      |
| 8"  | 20-1/4" | 10-1/2" | 16-3/8" | SS8T43       | 0.4      |
| 9"  | 21-1/4" | 11-1/4" | 17-1/4" | SS9T43       | 0.4      |
| 10" | 22-1/4" | 12-5/8" | 19"     | SS10T43      | 0.4      |
| 12" | 25-1/4" | 13-7/8" | 20-3/4" | SS12T43      | 0.4      |
| 14" | 29-1/4" | 16"     | 23-3/8" | SS14T43      | 0.4      |
| 16" | 32-1/4" | 17-3/8" | 25-1/4" | SS16T43      | 0.4      |
| 18" | 35"     | 19-3/8" | 27-7/8" | SS18T43      | 0.4      |
| 20" | 38"     | 21-3/8" | 30-3/8" | SS20T43      | 0.4      |
| 22" | 41"     | 22-3/4" | 32-1/4" | SS22T43      | 0.4      |
| 24" | 44"     | 24-5/8" | 34-5/8" | SS24T43      | 0.4      |

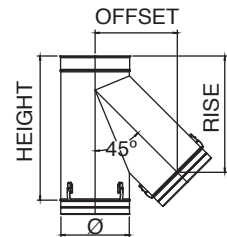


Available with smaller snout and custom height.

## SS 45-Degree Tee

Use in place of any tee for a 45° angle instead of 90°; can be used as a manifold connection to gang multiple boilers into a common vent.

| Ø   | Height  | Offset  | Rise    | Product Code | K Factor |
|-----|---------|---------|---------|--------------|----------|
| 3"  | 13-1/4" | 5-1/2"  | 10-3/8" | SS3T45       | 0.4      |
| 4"  | 14-1/4" | 6-5/8"  | 11"     | SS4T45       | 0.4      |
| 5"  | 15-1/4" | 8-1/8"  | 12-5/8" | SS5T45       | 0.4      |
| 6"  | 17-1/4" | 8-3/4"  | 13-1/2" | SS6T45       | 0.4      |
| 7"  | 18-1/4" | 9-1/2"  | 14-3/8" | SS7T45       | 0.4      |
| 8"  | 20-1/4" | 10-7/8" | 16"     | SS8T45       | 0.4      |
| 9"  | 21-1/4" | 11-5/8" | 17"     | SS9T45       | 0.4      |
| 10" | 22-1/4" | 13"     | 17-5/8" | SS10T45      | 0.4      |
| 12" | 25-1/4" | 14-1/2" | 20-3/8" | SS12T45      | 0.4      |
| 14" | 29-1/4" | 15-7/8" | 22-1/4" | SS14T45      | 0.4      |
| 16" | 32-1/4" | 18-1/8" | 24-7/8" | SS16T45      | 0.4      |
| 18" | 35"     | 20-1/4" | 27-1/2" | SS18T45      | 0.4      |
| 20" | 38"     | 22-1/4" | 29-7/8" | SS20T45      | 0.4      |
| 22" | 41"     | 23-5/8" | 31-5/8" | SS22T45      | 0.4      |
| 24" | 44"     | 25-1/2" | 34"     | SS24T45      | 0.4      |



Available with smaller snout and custom height.

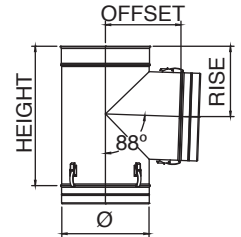
# SS Venting Tees

## SS 88-Degree Tee

Use for a 88° offset, or to combine connections from two or more appliances into a common vent. Can also use as a condensate management point when used in conjunction with drain fitting. All Standard Tees are completely welded.

| Ø   | Height  | Offset  | Rise    | Product Code | K Factor |
|-----|---------|---------|---------|--------------|----------|
| 3"  | 10-1/4" | 5-3/8"  | 5-1/4"  | SS3T88       | 1.21     |
| 4"  | 11-1/4" | 6-3/8"  | 5-5/8"  | SS4T88       | 1.21     |
| 5"  | 12-1/4" | 7-3/8"  | 6-1/4"  | SS5T88       | 1.21     |
| 6"  | 13-1/4" | 7-3/8"  | 6-5/8"  | SS6T88       | 1.21     |
| 7"  | 14-1/4" | 8-3/8"  | 7-1/4"  | SS7T88       | 1.21     |
| 8"  | 15-1/4" | 8-3/8"  | 7-5/8"  | SS8T88       | 1.21     |
| 9"  | 16-1/4" | 9-3/8"  | 8-1/4"  | SS9T88       | 1.21     |
| 10" | 17-1/4" | 9-3/8"  | 8-5/8"  | SS10T88      | 1.21     |
| 12" | 19-1/4" | 10-3/8" | 9-3/4"  | SS12T88      | 1.21     |
| 14" | 21-1/4" | 11-3/8" | 10-3/4" | SS14T88      | 1.21     |
| 16" | 23-1/4" | 12-3/8" | 11-3/4" | SS16T88      | 1.21     |
| 18" | 25-1/4" | 13-3/8" | 12-3/4" | SS18T88      | 1.21     |
| 20" | 27-1/4" | 14-3/8" | 13-3/4" | SS20T88      | 1.21     |
| 22" | 29-1/4" | 15-3/8" | 14-3/4" | SS22T88      | 1.21     |
| 24" | 31-1/4" | 16-3/8" | 15-3/4" | SS24T88      | 1.21     |

Available with smaller snout and custom height.



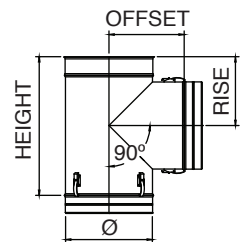
## SS 90-Degree Tee

Use for a 90° offset, or to combine connections from two or more appliances into a common vent. Can also use as a condensate management point when used in conjunction with drain fitting. All Standard Tees are completely welded.

| Ø   | Height  | Offset  | Rise    | Product Code | K Factor |
|-----|---------|---------|---------|--------------|----------|
| 3"  | 10-1/4" | 5-3/8"  | 5-1/4"  | SS3T90       | 1.21     |
| 4"  | 11-1/4" | 6-3/8"  | 5-1/2"  | SS4T90       | 1.21     |
| 5"  | 12-1/4" | 7-3/8"  | 6"      | SS5T90       | 1.21     |
| 6"  | 13-1/4" | 7-3/8"  | 6-1/2"  | SS6T90       | 1.21     |
| 7"  | 14-1/4" | 8-3/8"  | 7"      | SS7T90       | 1.21     |
| 8"  | 15-1/4" | 8-3/8"  | 7-1/2"  | SS8T90       | 1.21     |
| 9"  | 16-1/4" | 9-3/8"  | 8"      | SS9T90       | 1.21     |
| 10" | 17-1/4" | 9-3/8"  | 8-1/2"  | SS10T90      | 1.21     |
| 12" | 19-1/4" | 10-3/8" | 9-1/2"  | SS12T90      | 1.21     |
| 14" | 21-1/4" | 11-3/8" | 10-1/2" | SS14T90      | 1.21     |
| 16" | 23-1/4" | 12-3/8" | 11-1/2" | SS16T90      | 1.21     |
| 18" | 25-1/4" | 13-3/8" | 12-1/2" | SS18T90      | 1.21     |
| 20" | 27-1/4" | 14-3/8" | 13-1/2" | SS20T90      | 1.21     |
| 22" | 29-1/4" | 15-3/8" | 14-1/2" | SS22T90      | 1.21     |
| 24" | 31-1/4" | 16-3/8" | 15-1/2" | SS24T90      | 1.21     |

Available with smaller snout and custom height.

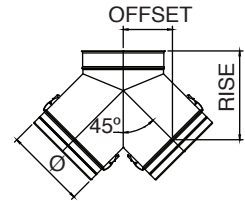
Available with removeable branch code: SSøT90BRU



# SS Venting Tees

## SS 90-Degree Tee Y

| Ø   | Offset  | Rise    | Product Code | K Factor |
|-----|---------|---------|--------------|----------|
| 3"  | 4-1/2"  | 8-1/2"  | SS3TY90      | 0.6      |
| 4"  | 4-1/2"  | 8-1/2"  | SS4TY90      | 0.6      |
| 5"  | 5-1/4"  | 10-1/8" | SS5TY90      | 0.6      |
| 6"  | 5-1/4"  | 10-1/8" | SS6TY90      | 0.6      |
| 7"  | 6"      | 10-7/8" | SS7TY90      | 0.6      |
| 8"  | 6"      | 10-7/8" | SS8TY90      | 0.6      |
| 9"  | 6-5/8"  | 12-5/8" | SS9TY90      | 0.6      |
| 10" | 6-5/8"  | 12-5/8" | SS10TY90     | 0.6      |
| 12" | 7-3/8"  | 13-1/4" | SS12TY90     | 0.6      |
| 14" | 8-1/8"  | 15"     | SS14TY90     | 0.6      |
| 16" | 8-3/4"  | 16-3/4" | SS16TY90     | 0.6      |
| 18" | 9-1/2"  | 17-3/8" | SS18TY90     | 0.6      |
| 20" | 10-1/4" | 18-1/8" | SS20TY90     | 0.6      |
| 22" | 10-7/8" | 18-7/8" | SS22TY90     | 0.6      |
| 24" | 11-5/8" | 20-1/2" | SS24TY90     | 0.6      |

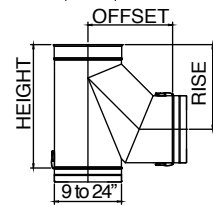
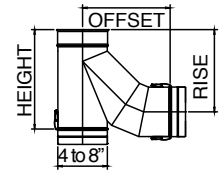


Available with smaller snout and custom height.

## SS Lateral Secure Tee

Use to transition from horizontal to vertical with improved flue gas flow.

| Ø   | Height  | Offset  | Rise    | Product Code | K Factor |
|-----|---------|---------|---------|--------------|----------|
| 3"  | 9-1/8"  | 8-1/2"  | 7-3/4"  | SS3BT        | 0.55     |
| 4"  | 10-1/8" | 9-1/4"  | 8-7/8"  | SS4BT        | 0.55     |
| 5"  | 12-1/8" | 10-1/2" | 10"     | SS5BT        | 0.55     |
| 6"  | 13-1/8" | 11-3/4" | 11-1/8" | SS6BT        | 0.55     |
| 7"  | 15-1/8" | 13"     | 12-1/4" | SS7BT        | 0.55     |
| 8"  | 16-1/8" | 14-1/4" | 13-3/8" | SS8BT        | 0.55     |
| 9"  | 18-1/8" | 12-1/2" | 12-1/2" | SS9BT        | 0.55     |
| 10" | 19-1/8" | 13-3/8" | 13-3/8" | SS10BT       | 0.55     |
| 12" | 22-1/8" | 15-1/4" | 15-1/4" | SS12BT       | 0.55     |
| 14" | 25-1/8" | 17"     | 17"     | SS14BT       | 0.55     |
| 16" | 28-1/8" | 18-7/8" | 18-7/8" | SS16BT       | 0.55     |
| 18" | 30-7/8" | 20-3/4" | 20-1/2" | SS18BT       | 0.55     |
| 20" | 33-7/8" | 22-1/2" | 22-1/2" | SS20BT       | 0.55     |
| 22" | 36-7/8" | 24-3/8" | 24-3/8" | SS22BT       | 0.55     |
| 24" | 39-7/8" | 26-1/8" | 26-1/4" | SS24BT       | 0.55     |



Available with smaller snout and custom height.

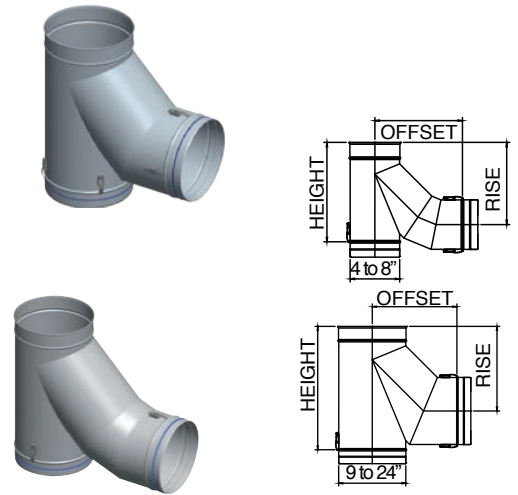


# SS Venting Tees

## SS Lateral Secure Tee 88-Degree

Use to transition from horizontal to vertical with improved flue gas flow.

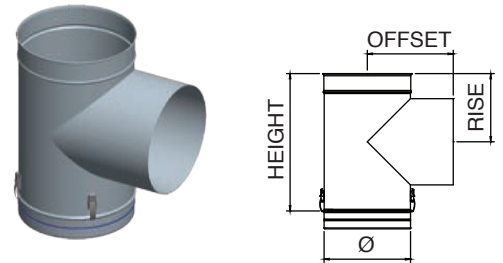
| Ø   | Height  | Offset  | Rise    | Product Code | K Factor |
|-----|---------|---------|---------|--------------|----------|
| 3"  | 10-1/8" | 8-1/2"  | 8-1/2"  | SS3BT88      | 0.55     |
| 4"  | 11-1/8" | 9-1/4"  | 9-1/4"  | SS4BT88      | 0.55     |
| 5"  | 12-1/8" | 10-1/2" | 10-1/2" | SS5BT88      | 0.55     |
| 6"  | 14-1/8" | 11-3/4" | 11-3/4" | SS6BT88      | 0.55     |
| 7"  | 16-1/8" | 13"     | 13"     | SS7BT88      | 0.55     |
| 8"  | 17-1/8" | 14-1/4" | 14-1/8" | SS8BT88      | 0.55     |
| 9"  | 19-1/8" | 12-5/8" | 13-1/4" | SS9BT88      | 0.55     |
| 10" | 20-1/8" | 13-1/2" | 14-1/4" | SS10BT88     | 0.55     |
| 12" | 23-1/8" | 15-3/8" | 16-1/8" | SS12BT88     | 0.55     |
| 14" | 26-1/8" | 17-3/8" | 18-1/8" | SS14BT88     | 0.55     |
| 16" | 29-1/8" | 19-1/8" | 20-1/8" | SS16BT88     | 0.55     |
| 18" | 31-7/8" | 21"     | 22"     | SS18BT88     | 0.55     |
| 20" | 34-7/8" | 22-7/8" | 24"     | SS20BT88     | 0.55     |
| 22" | 37-7/8" | 24-3/4" | 26"     | SS22BT88     | 0.55     |
| 24" | 40-7/8" | 26-5/8" | 28"     | SS24BT88     | 0.55     |



Available with smaller snout and custom height.

## SS Barometric Tee

| Ø   | Height  | Offset | Rise    | Product Code | K Factor |
|-----|---------|--------|---------|--------------|----------|
| 3"  | 10-1/4" | 5"     | 5"      | SS3BMT       | 0.2      |
| 4"  | 11-1/4" | 5"     | 5-1/2"  | SS4BMT       | 0.2      |
| 5"  | 12-1/4" | 5"     | 6"      | SS5BMT       | 0.2      |
| 6"  | 13-1/4" | 6"     | 6-1/2"  | SS6BMT       | 0.2      |
| 7"  | 14-1/4" | 7"     | 7"      | SS7BMT       | 0.2      |
| 8"  | 15-1/4" | 8"     | 7-1/2"  | SS8BMT       | 0.2      |
| 9"  | 16-1/4" | 9"     | 8"      | SS9BMT       | 0.2      |
| 10" | 17-1/4" | 10"    | 8-1/2"  | SS10BMT      | 0.2      |
| 12" | 19-1/4" | 12"    | 9-1/2"  | SS12BMT      | 0.2      |
| 14" | 21-1/4" | 14"    | 10-1/2" | SS14BMT      | 0.2      |
| 16" | 23-1/4" | 16"    | 11-1/2" | SS16BMT      | 0.2      |
| 18" | 25-1/4" | 18"    | 12-1/2" | SS18BMT      | 0.2      |
| 20" | 27-1/4" | 20"    | 13-1/2" | SS20BMT      | 0.2      |
| 22" | 29-1/4" | 22"    | 14-1/2" | SS22BMT      | 0.2      |
| 24" | 31-1/4" | 24"    | 15-1/2" | SS24BMT      | 0.2      |



Available with smaller snout and custom height.

# SS Venting Tees

## SS Tee Cap

Use to cap Standard Tee, Branch Tee or Boot Tee. Remove Tee Cap to inspect the system; clean out debris or collected condensate.

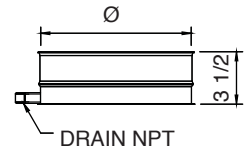
| Ø         | Height | Product Code |
|-----------|--------|--------------|
| 3" to 24" | 3-1/2" | SSØTC        |



## SS Drain Tee Cap

Use instead of Tee Cap to manage condensates at the bottom of a vertical run. Drain plug not included.

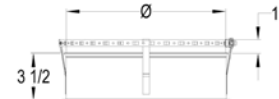
| Ø         | Height | Product Code |
|-----------|--------|--------------|
| 3" to 24" | 3-1/2" | SSØDTC       |



Drain Ø4 – Ø10, 1/4 NPT, 1/2 O.D  
 Drain Ø12 – Ø24, 3/8 NPT, 5/8 O.D

## SS Barometric Tee Cap

| Ø         | Height | Product Code |
|-----------|--------|--------------|
| 3" to 24" | 3-1/2" | SSØBMTc      |

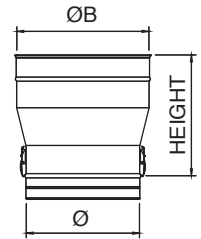


# SS Venting Accessories

## SS Tapered Increaser

Use to increase vent diameter. Creates a smooth transition for an undistruptive flow. Available in custom size combinations.

| Ø         | ØB Available | Height  | Product Code | K Factor |
|-----------|--------------|---------|--------------|----------|
| 3" to 9"  | Ø+1"         | 11-7/8" | SSØTIN(ØB)   | 0.05     |
| 3" to 22" | Ø+2"         | 12-7/8" | SSØTIN(ØB)   | 0.10     |
| 3" to 9"  | Ø+3"         | 13-7/8" | SSØTIN(ØB)   | 0.15     |
| 3" to 20" | Ø+4"         | 14-7/8" | SSØTIN(ØB)   | 0.20     |
| 3" to 7"  | Ø+5"         | 15-7/8" | SSØTIN(ØB)   | 0.25     |
| 3" to 18" | Ø+6"         | 16-7/8" | SSØTIN(ØB)   | 0.30     |

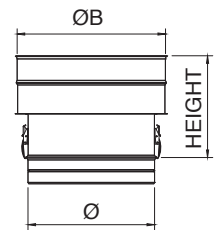


## SS Step Increaser

Use to increase vent diameter when space constraints are an issue. Available in custom size combinations.

| Ø         | ØB Available | Height | Product Code | K Factor                           |
|-----------|--------------|--------|--------------|------------------------------------|
| 3" to 22" | 5" to 24"    | 10"    | SSØSIN(ØB)   | $KØ = (1-B^2)^2$<br>$KØB = KØ/B^4$ |

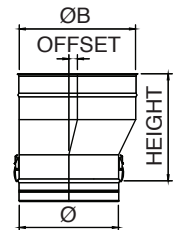
B= Ø/ØB



## SS Eccentric Tapered Increaser

Use to transition to a larger diameter pipe. Prevents condensate puddling when used on horizontal runs. Aids in reducing formation of condensates. Available in custom size combinations.

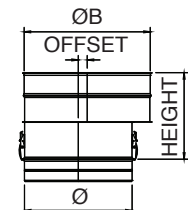
| Ø         | ØB Available | Height  | Offset | Product Code | K Factor |
|-----------|--------------|---------|--------|--------------|----------|
| 3" to 9"  | Ø+1"         | 12-1/4" | 1/2"   | SSØETIN(ØB)  | 0.05     |
| 3" to 22" | Ø+2"         | 13-1/4" | 1"     | SSØETIN(ØB)  | 0.10     |
| 3" to 9"  | Ø+3"         | 14-1/4" | 1-1/2" | SSØETIN(ØB)  | 0.15     |
| 3" to 20" | Ø+4"         | 15-1/4" | 2"     | SSØETIN(ØB)  | 0.20     |
| 3" to 7"  | Ø+5"         | 16-1/4" | 2-1/2" | SSØETIN(ØB)  | 0.25     |
| 3" to 18" | Ø+6"         | 17-1/4" | 3"     | SSØETIN(ØB)  | 0.30     |



## SS Eccentric Step Increaser

| Ø         | ØB Available | Height | Offset      | Product Code | K Factor                           |
|-----------|--------------|--------|-------------|--------------|------------------------------------|
| 3" to 22" | 5" to 24"    | 10"    | $(ØB-ØA)/2$ | SSØESIN(ØB)  | $KØ = (1-B^2)^2$<br>$KØB = KØ/B^4$ |

B= Ø/ØB

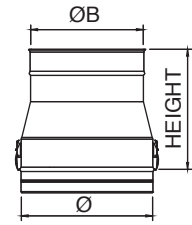


# SS Venting Accessories

## SS Tapered Reducer

Use to reduce vent diameter. Creates a smooth transition for an undistruptive flow. Available in custom size combinations.

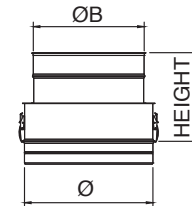
| Ø          | ØB Available | Height  | Product Code | K Factor |
|------------|--------------|---------|--------------|----------|
| 5" to 10"  | Ø+1"         | 11-7/8" | SSØTRD(ØB)   | 0.07     |
| 6" to 24"  | Ø+2"         | 12-7/8" | SSØTRD(ØB)   | 0.09     |
| 6" to 12"  | Ø+3"         | 13-7/8" | SSØTRD(ØB)   | 0.11     |
| 8" to 24"  | Ø+4"         | 14-7/8" | SSØTRD(ØB)   | 0.13     |
| 9" to 24"  | Ø+5"         | 15-7/8" | SSØTRD(ØB)   | 0.15     |
| 10" to 24" | Ø+6"         | 16-7/8" | SSØTRD(ØB)   | 0.17     |



## SS Step Reducer

Use to reduce vent diameter when space constraints are an issue. Available in custom size combinations.

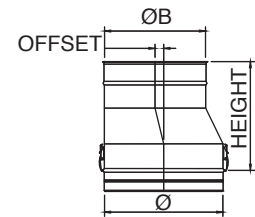
| Ø         | ØB Available | Height | Product Code | K Factor                           |
|-----------|--------------|--------|--------------|------------------------------------|
| 5" to 24" | 4" to 22"    | 10"    | SSØSRD(ØB)   | $KØ = (1-B^2)^2$<br>$KØB = KØ/B^4$ |



B= Ø/ØB

## SS Eccentric Tapered Reducer

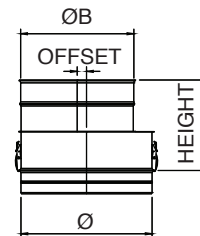
| Ø          | ØB Available | Height  | Offset | Product Code | K Factor |
|------------|--------------|---------|--------|--------------|----------|
| 5" to 10"  | Ø+1"         | 12-1/4" | 1/2"   | SSØETRD(ØB)  | 0.07     |
| 6" to 24"  | Ø+2"         | 13-1/4" | 1"     | SSØETRD(ØB)  | 0.09     |
| 6" to 12"  | Ø+3"         | 14-1/4" | 1-1/2" | SSØETRD(ØB)  | 0.11     |
| 8" to 24"  | Ø+4"         | 15-1/4" | 2"     | SSØETRD(ØB)  | 0.13     |
| 9" to 24"  | Ø+5"         | 16-1/4" | 2-1/2" | SSØETRD(ØB)  | 0.15     |
| 10" to 24" | Ø+6"         | 17-1/4" | 3"     | SSØETRD(ØB)  | 0.17     |



## SS Eccentric Step Reducer

| Ø         | ØB Available | Height | Offset        | Product Code | K Factor                           |
|-----------|--------------|--------|---------------|--------------|------------------------------------|
| 5" to 10" | 4" to 22"    | 10"    | $(ØA-ØB)/2$ " | SSØESRD(ØB)  | $KØ = (1-B^2)^2$<br>$KØB = KØ/B^4$ |

B= Ø/ØB

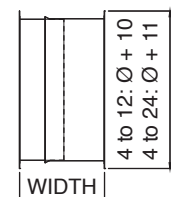
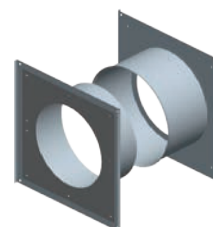


## SS Wall Thimble

Use for through-the-wall installation. Fits between standard wall studs.

| Ø         | Height    | Product Code |
|-----------|-----------|--------------|
| 3" to 24" | 9" to 17" | SSØWT        |

Wall penetration opening dimensions available in the installation instructions manual.

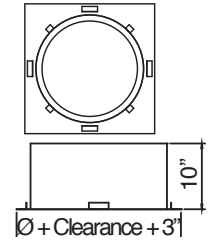
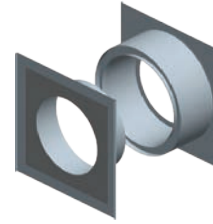


# SS Venting Accessories

## SS Wall Thimble Insulated

| Ø         | Height    | Product Code |
|-----------|-----------|--------------|
| 3" to 24" | 9" to 17" | SSØWTI       |

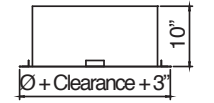
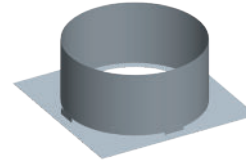
Wall penetration opening dimensions available in the installation instructions manual.



## SS Roof Thimble

| Ø         | Height | Product Code |
|-----------|--------|--------------|
| 3" to 24" | 10"    | SSØRT        |

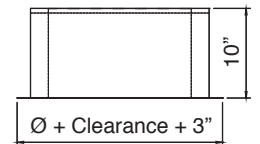
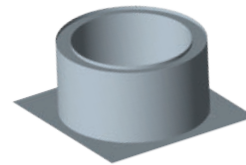
Roof/floor penetration opening dimensions available in the installation instructions manual.



## SS Roof Thimble Insulated

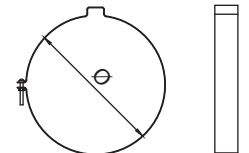
| Ø         | Height | Product Code |
|-----------|--------|--------------|
| 3" to 24" | 10"    | SSØRTI       |

Roof/floor penetration opening dimensions available in the installation instructions manual.



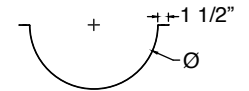
## SS Suspension Band

| Ø         | Product Code |
|-----------|--------------|
| 3" to 24" | SSØSB        |



## SS Cradle Support

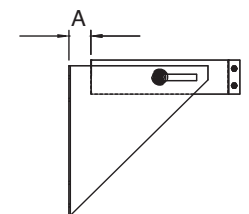
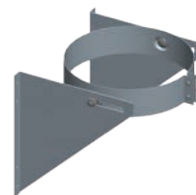
| Ø         | Product Code |
|-----------|--------------|
| 3" to 24" | SSØCS        |



## SS Wall Support

Use to support vent pipe or tee sections. Provides proper clearance to combustibles.

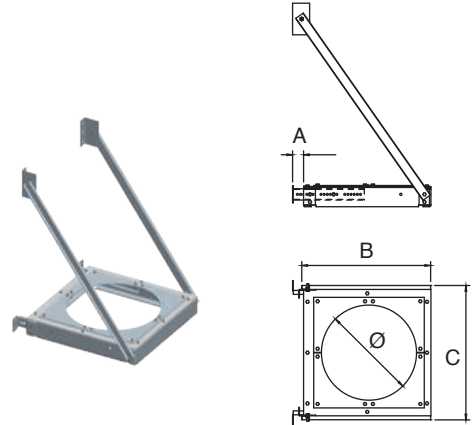
| Ø          | Height   | Product Code |
|------------|----------|--------------|
| 3" to 12"  | 2" to 5" | SSØWS        |
| 14" to 24" | 4" to 7" | SSØWS        |



# SS Venting Accessories

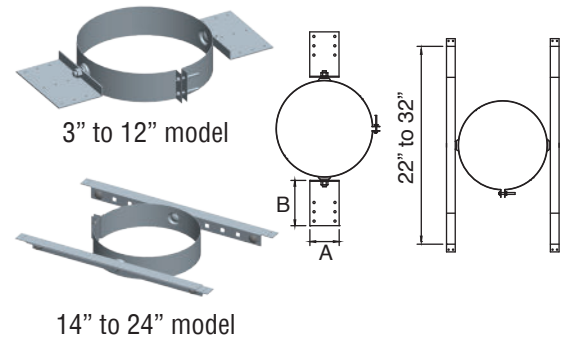
## SS Wall Support HD

| Ø   | A        | B   | C   | Product Code |
|-----|----------|-----|-----|--------------|
| 3"  | 2" to 7" | 7"  | 8"  | SS3WSHD      |
| 4"  | 2" to 7" | 7"  | 8"  | SS4WSHD      |
| 5"  | 2" to 7" | 9"  | 9"  | SS5WSHD      |
| 6"  | 2" to 7" | 12" | 10" | SS6WSHD      |
| 7"  | 2" to 7" | 12" | 11" | SS7WSHD      |
| 8"  | 2" to 7" | 12" | 12" | SS8WSHD      |
| 9"  | 2" to 7" | 14" | 13" | SS9WSHD      |
| 10" | 2" to 7" | 14" | 14" | SS10WSHD     |
| 12" | 2" to 7" | 16" | 16" | SS12WSHD     |
| 14" | 4" to 9" | 22" | 20" | SS14WSHD     |
| 16" | 4" to 9" | 22" | 22" | SS16WSHD     |
| 18" | 4" to 9" | 26" | 24" | SS18WSHD     |
| 20" | 4" to 9" | 26" | 26" | SS20WSHD     |
| 22" | 4" to 9" | 30" | 28" | SS22WSHD     |
| 24" | 4" to 9" | 30" | 30" | SS24WSHD     |



## SS Roof Support

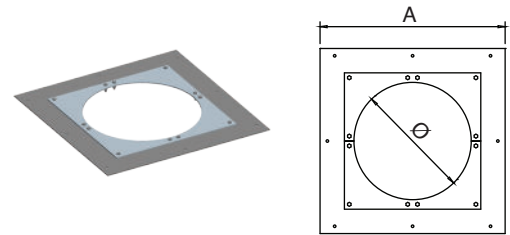
| Ø          | A          | B      | Product Code |
|------------|------------|--------|--------------|
| 3" to 12"  | 6-1/2"     | 7-5/8" | SSØRS        |
| 14" to 24" | 22" to 32" |        | SSØRS        |



## SS Anchor Plate

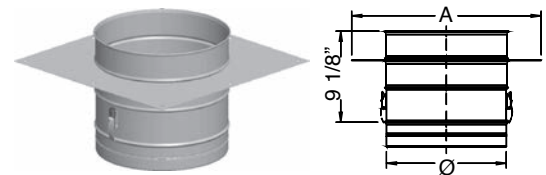
Use when penetrating floor levels.

| Ø          | A     | Product Code |
|------------|-------|--------------|
| 3" to 12"  | Ø+7"  | SSØAP        |
| 14" to 24" | Ø+11" | SSØAP        |



## SS Length Anchor Plate

| Ø          | A     | Product Code |
|------------|-------|--------------|
| 3" to 12"  | Ø+7"  | SSØAPL       |
| 14" to 24" | Ø+11" | SSØAPL       |

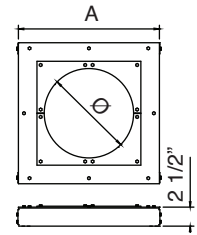
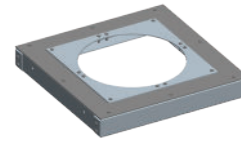


# SS Venting Accessories

## SS Anchor Plate HD

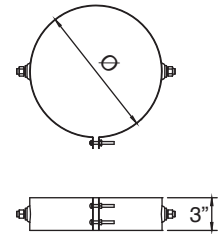
Use when penetrating floor levels.

| $\emptyset$ | A               | Product Code        |
|-------------|-----------------|---------------------|
| 3" to 12"   | $\emptyset+7"$  | SS $\emptyset$ APHD |
| 14" to 24"  | $\emptyset+11"$ | SS $\emptyset$ APHD |



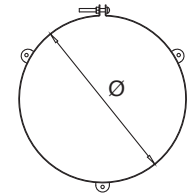
## SS Roof Brace

| $\emptyset$ | Product Code      |
|-------------|-------------------|
| 3" to 24"   | SS $\emptyset$ RB |



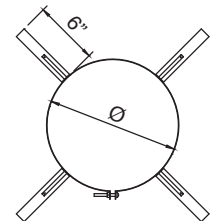
## SS Guy Wire Band

| $\emptyset$ | Product Code       |
|-------------|--------------------|
| 3" to 24"   | SS $\emptyset$ GWB |



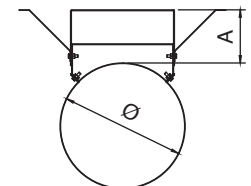
## SS Centering Band

| $\emptyset$ | Product Code      |
|-------------|-------------------|
| 3" to 24"   | SS $\emptyset$ CB |



## SS Wall Guide

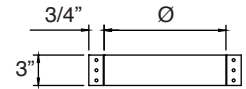
| $\emptyset$ | A            | Product Code      |
|-------------|--------------|-------------------|
| 3" to 24"   | 2" to 5-1/2" | SS $\emptyset$ WG |
| 14" to 24"  | 4" to 7-1/2" | SS $\emptyset$ WG |



# SS Venting Accessories

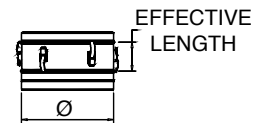
## SS Guy Support

| Ø         | Product Code |
|-----------|--------------|
| 3" to 24" | SSØGS        |



## SS Double Male Adaptor

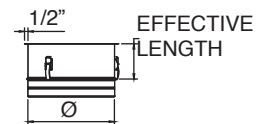
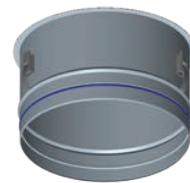
| Ø         | Effective Length | Product Code |
|-----------|------------------|--------------|
| 3" to 24" | 3-7/8"           | SSØDMA       |



## SS Male Flange Adaptor

| Ø         | Effective Length | Product Code |
|-----------|------------------|--------------|
| 3" to 24" | 4-7/8"           | SSØMFA       |

Includes V-bands, except in 3" and 4" diameters.



## SS Female Flange Adaptor

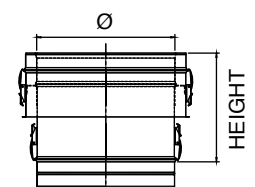
| Ø         | Effective Length | Product Code |
|-----------|------------------|--------------|
| 3" to 24" | 4-1/4"           | SSØFFA       |

Includes V-bands, except in 3" and 4" diameters.



## SS to SSD/SSID Adaptor

| Ø         | Effective Length | Product Code | Product Code |
|-----------|------------------|--------------|--------------|
| 3" to 24" | 7-7/8"           | SSØSSDA      | SSØSSIDA     |

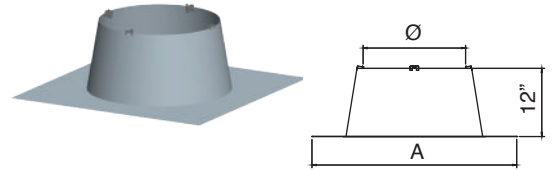




# SS Venting Accessories

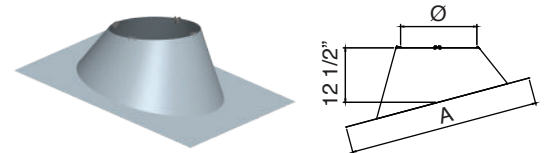
## SS Flat Flashing

| Ø        | A   | Product Code |
|----------|-----|--------------|
| 3" to 6" | 16" | SS_F         |
| 7"       | 18" | SS7F         |
| 8" to 9" | 26" | SSØF         |
| 10"      | 28" | SS10F        |
| 12"      | 30" | SS12F        |
| 14"      | 31" | SS14F        |
| 16"      | 34" | SS16F        |
| 18"      | 36" | SS18F        |
| 20"      | 38" | SS20F        |
| 22"      | 40" | SS22F        |
| 24"      | 42" | SS24F        |



## SS Adjustable Flashing

| Ø        | A       | Height  | Product Code |
|----------|---------|---------|--------------|
| 3" to 5" | 30"     | 12-1/2" | SSØFA        |
| 6" to 7" | 32"     | 12-1/2" | SS6FA        |
| 8"       | 34"     | 12-1/2" | SS8FA        |
| 9"       | 35-3/8" | 12-1/2" | SS9FA        |
| 10"      | 36-1/2" | 12-1/2" | SS10FA       |
| 12"      | 38-1/2" | 12-1/2" | SS12FA       |
| 14"      | 41"     | 12-1/2" | SS14FA       |
| 16"      | 43"     | 12-1/2" | SS16FA       |
| 18"      | 45"     | 12-1/2" | SS18FA       |
| 20"      | 47-1/4" | 12-1/2" | SS20FA       |
| 22"      | 49-1/2" | 12-1/2" | SS22FA       |
| 24"      | 51-1/2" | 12-1/2" | SS24FA       |



Adjustable from 5° to 30°.  
Roof pitch 1/12" to 7/12".

## SS Storm Collar

| Ø         | Effective Length | Product Code |
|-----------|------------------|--------------|
| 3" to 24" | 6-1/4"           | SSØSC        |

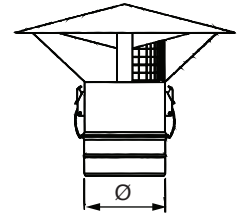
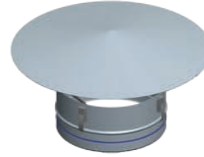


# SS Venting Terminations

## SS Rain Cap

Use to terminate above the roof line. Not recommended in cold climate as condensate can freeze on cap.

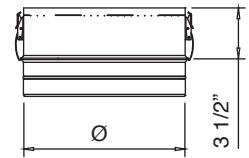
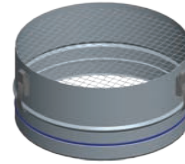
| Ø         | Product Code | Product Code with Bird Screen | K Factor |
|-----------|--------------|-------------------------------|----------|
| 3" to 24" | SSØRCU       | SSØRCB                        | .50      |



## SS Screened Termination

Use for horizontal through-the-wall terminations. Check installation instructions for restrictions on horizontal terminations, such as minimum distance from windows and doors.

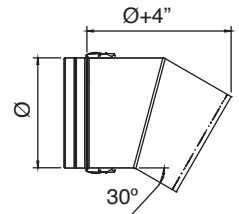
| Ø         | Product Code | K Factor |
|-----------|--------------|----------|
| 3" to 24" | SSØST        | .14      |



## SS 30° Screen Termination

Use for through-the-wall termination. Deters rain and other elements from entering the vent system. Check installation instructions for restrictions on horizontal terminations, such as minimum distance from windows and doors.

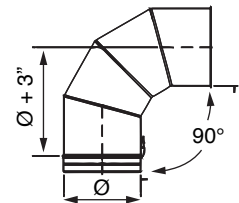
| Ø         | Product Code | K Factor |
|-----------|--------------|----------|
| 3" to 24" | SSØSTA       | .70      |



## SS 90° Screen Termination

Use for through-the-wall termination. Deters rain and other elements from entering the vent system. Check installation instructions for restrictions on horizontal terminations, such as minimum distance from windows and doors.

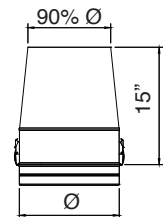
| Ø         | Product Code | K Factor |
|-----------|--------------|----------|
| 3" to 10" | SSØST90A     | .50      |



## SS Exit Cone

Use for vertical termination. Creates static back pressure to adjust harmonics. Venturi effect increases velocity of flue gases. Reduced opening provides for a smaller cross section to deter rain from entering the system.

| Ø         | Product Code | K Factor |
|-----------|--------------|----------|
| 3" to 24" | SSØEC        | .60      |

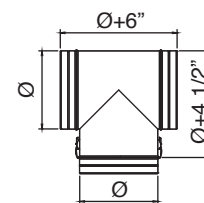


# SS Venting Terminations

## SS Termination Tee With Screen

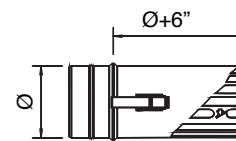
Use for standard and high-wind through-the-wall terminations. Check installation instructions for restrictions on horizontal terminations, such as minimum distance from windows and doors.

| $\emptyset$ | Product Code      | K Factor |
|-------------|-------------------|----------|
| 3" to 24"   | SS $\emptyset$ TT | .35      |



## SS Mitter Cut

| $\emptyset$ | Product Code      | K Factor |
|-------------|-------------------|----------|
| 3" to 24"   | SS $\emptyset$ MC | .14      |

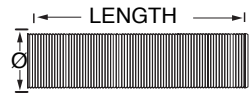


# Secure Seal Flex

## Secure Seal Flex

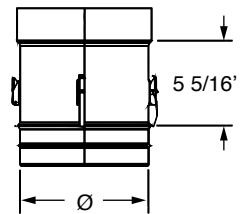
Use to vent Category II,III and IV gas burning appliances. Listed to UL 1738. Can only be used in vertical or near vertical runs.

| Ø        | Length | Product Code |
|----------|--------|--------------|
| 3" to 8" | 20'    | SSØFLEX-20   |
| 3" to 8" | 25'    | SSØFLEX-25   |
| 3" to 8" | 30'    | SSØFLEX-30   |
| 3" to 8" | 35'    | SSØFLEX-35   |
| 3" to 8" | 125'   | SSØFLEX-125  |



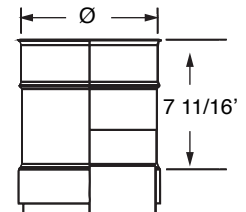
## Adaptor SS to Flex

| Ø         | Length | Product Code |
|-----------|--------|--------------|
| 3" to 12" | 5 3/8' | SSØAMF       |



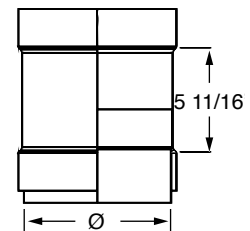
## Adaptor SS Flex to SS

| Ø         | Length | Product Code |
|-----------|--------|--------------|
| 3" to 12" | 7 3/4' | SSØAFF       |



## Adaptor SS Flex to Flex

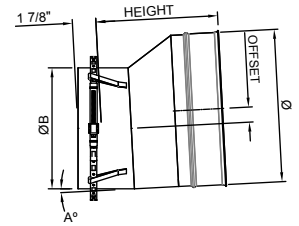
| Ø         | Length | Product Code |
|-----------|--------|--------------|
| 3" to 12" | 5 3/4' | SSØAF        |



# SS Venting Adapters

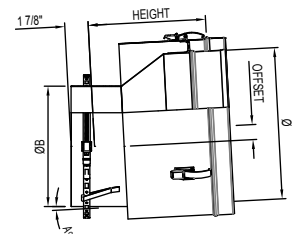
## Fulton EDR 2000/3000, 4000 & 5000/6000 SS Adapter

| Ø   | ØB (O.D.) | Height   | Offset  | A | Product Code |
|-----|-----------|----------|---------|---|--------------|
| 8"  | 5 23/32"  | 9 7/16"  | 1 1/8"  | 0 | SS5.7FEDR8U  |
| 8"  | 5 23/32"  | 9 7/16"  | 1 1/8"  | 0 | SS5.7FEDR8B  |
| 12" | 9 5/8"    | 9 11/16" | 1 3/16" | 3 | SS12FEDRU    |
| 12" | 9 5/8"    | 9 11/16" | 1 3/16" | 3 | SS12FEDRB    |
| 14" | 9 5/8"    | 9 11/16" | 2 3/16" | 3 | SS14FEDRU    |
| 14" | 9 5/8"    | 9 11/16" | 2 3/16" | 3 | SS14FEDRB    |



## Fulton EDR 2000/3000, 4000 & 5000/6000 SSD Adapter

| Ø   | ØB (O.D.) | Height  | Offset  | A | Product Code  |
|-----|-----------|---------|---------|---|---------------|
| 8"  | 5 23/32"  | 9 3/16" | 1 1/8"  | 0 | SSD5.7FEDR8UK |
| 8"  | 5 23/32"  | 9 3/16" | 1 1/8"  | 0 | SSD5.7FEDR8BK |
| 12" | 9 5/8"    | 9 7/16" | 1 3/16" | 3 | SSD12FEDRUK   |
| 12" | 9 5/8"    | 9 7/16" | 1 3/16" | 3 | SSD12FEDRBK   |
| 14" | 9 5/8"    | 9 7/16" | 2 3/16" | 3 | SSD14FEDRUK   |
| 14" | 9 5/8"    | 9 7/16" | 2 3/16" | 3 | SSD14FEDRBK   |







BUILD FOR THE FUTURE

Customer Service and Support:

|                              |              |
|------------------------------|--------------|
| Airmate (USA).....           | 800.992.8368 |
| Airmate (CAN).....           | 888.735.5475 |
| Ameriflow.....               | 800.252.8467 |
| Amerivent (Retail).....      | 800.252.8467 |
| Amerivent (Wholesale).....   | 800.423.4270 |
| Amerivent (Support).....     | 800.748.0392 |
| AMPCO (USA).....             | 800.669.3269 |
| AMPCO (CAN).....             | 888.735.5475 |
| Duravent.....                | 800.835.4429 |
| Hart & Cooley.....           | 800.433.6341 |
| Hart & Cooley (Support)..... | 800.748.0392 |
| Heatfab (USA).....           | 800.772.0739 |
| Heatfab (CAN).....           | 800.848.2149 |
| Lima.....                    | 800.423.4270 |
| Milcor.....                  | 800.774.5240 |
| Portals Plus.....            | 800.774.5240 |
| RPS.....                     | 800.624.8642 |
| Security Chimney (USA).....  | 800.361.4909 |
| Security Chimney (CAN).....  | 800.667.3387 |
| Selkirk (USA).....           | 800.848.2149 |
| Selkirk (CAN).....           | 888.735.5475 |
| Selkirk (Support).....       | 800.748.0392 |

Manufacturing & Distribution Centers:

|                  |                              |
|------------------|------------------------------|
| CANADA           |                              |
| Nobel, ON        | Manufacturing                |
| Laval, QC        | Manufacturing                |
| Prescott, ON     | Distribution                 |
| USA              |                              |
| Grand Rapids, MI | Center of Excellence         |
| Dallas, TX       | Distribution                 |
| Englewood, OH    | Distribution                 |
| Huntsville, AL   | Manufacturing & Distribution |
| Mira Loma, CA    | Distribution                 |
| Nampa, ID        | Manufacturing & Distribution |
| Turner Falls, MA | Manufacturing & Distribution |
| Vacaville, CA    | Manufacturing                |
| MEXICO           |                              |
| Ojinaga, MX      | Manufacturing                |
| Mexicali, MX     | Manufacturing                |

Corporate Headquarters:

Duravent Group  
 28 W. Adams, Suite 1810  
 Detroit, MI 48226  
 Tel: 800.835.4429  
 Email: [info@duraventgroup.com](mailto:info@duraventgroup.com)  
[www.duraventgroup.com](http://www.duraventgroup.com)



**duravent**<sup>™</sup>  
GROUP

BUILD FOR THE FUTURE

[www.duraventgroup.com](http://www.duraventgroup.com)

